

- 
- Long Reach Foam Filled Chainsaws
 - Pole Pullers & Tampers
 - Hydraulic Impact Wrench
 - Battery Powered, Hand Operated & Remote Head Crimpers
 - Battery Powered, Hand Operated & Remote Head Cutters
 - Compression Dies & Metal Hole Punches & Dies
 - Wood Augers
 - Hydraulic Pumps & HP & LP Hoses
 - Deep & Long Tube Impact Sockets

HYDRAULIC EQUIPMENT

HYDRAULIC EQUIPMENT - TABLE OF CONTENTS

Crimping Tools, Battery Powered	C4
12 Tonne Crimper - Klauke	C4
13.5 Tonne Crimper - Klauke	C5
Dies - 15 Tonne	C5
5 Tonne Crimper & Cutter - Klauke	C6
3.5 Tonne Crimper - Klauke	C6
4 Tonne Square Crimper - Klauke	C7
50 Series Mini Crimper, Electromechanical - Klauke	C7
12 Tonne Crimper - LITE	C8
5.5 Tonne Crimper - Indent - Klauke	C8
Dies, Various	C9
6 Tonne Dies	
Suits EK425CFM	C9
Series 4 Dies	
Suits EK354CFM	C9
Cembre Style Dies	
Suits EK50CFM	C9
12 Tonne Dies, Aluminium - K12 Series	C10
12 Tonne Cutting Die	C10
12 Tonne Dies, Copper - K12 Series	C11
12 Tonne Nest and Indent Dies - K12 Series	C12
12 Tonne Copper Earth Connector Dies - K12 Series	C13
Crimpers, Hand Operated - Hydraulic	C14
6 & 12 Tonne Crimpers, Hand Operated - Hydraulic	C14
Crimpers, Remote Head - Hydraulic	C14
12 Tonne Crimpers, Remote Head - Hydraulic	C14
25 Tonne Crimp Head - Single Acting - Klauke	C15
25 Tonne Dies	C15
25T to 12T Die Adapter	C15

45 Tonne Crimp Head - Single Acting	C16
45 Tonne Dies	C16
60 Tonne - Crimp Head - Single Acting	C17
60 Tonne Dies	C17
100 Tonne Crimp Head - Double Acting - TESMEC	C18
100 Tonne Crimp Head - Double Acting	C18
100 Tonne Crimp Head - Single Acting	C19
100 Tonne Dies	C19
Cutters Selection Matrix	C20
Cutters - Battery Powered	C21
6, 8 & 12mm Bolt Cutters - Klauke	C21
20mm Cutter, ACSR/AL/CU - Klauke	C22
20mm Remote Control Cutter, ACSR/AL/CU - Klauke	C22
25mm Cutter, ACSR/Stay Wire/AL/CU - Klauke	C23
25mm Cutter, ACSR/AL/CU - Klauke	C23
32mm Cutter, AL/CU - Klauke	C24
32mm Remote Control Cutter, AL/CU - Klauke	C24
45mm Cutter, ACSR/Stay/Armoured/AL/CU - Klauke	C25
45mm Cutter, ACSR/Stay/AL/CU - Klauke	C25
50mm Cutter, AL/CU - Klauke	C26
55mm Cutter, ACSR/AL/CU - Klauke	C26
55mm Ratchet Cutter, ACSR/AL/CU - Klauke	C27
50 & 65mm Ratchet style Cutters - AL/CU	C27
85mm Battery Cutters	C28
105mm Battery Cutters	C28
Cutters, Hand Operated, Hydraulic	C29
20, 25 & 40mm Hand Operated Cutters	C29
Cutters, Remote Head, Hydraulic	C29
40 to 105mm Cutters, Remote Head	C29

HYDRAULIC EQUIPMENT - TABLE OF CONTENTS

Universal Tools, Battery Powered - Crimp/Cut/Punch.....	C30	Sockets Sets ½" Drive.....	C42
12 Tonne Universal Tool - Pistol Grip - Klauke.....	C31	Deep Impact Socket Set - 26 & 29 Piece Kits.....	C42
Universal Tool Adaptors.....	C31	Extra Deep Tube Socket Set - 7 Piece Kit.....	C42
6 Tonne Universal Tool - Pistol Grip - Klauke.....	C32	METRINCH Socket Set - 15 Piece Kit.....	C42
6 Tonne Universal Tool - In-Line - Klauke.....	C32	Augers, Impact - Woodpecker.....	C43
1000V Insulated Battery Powered Tools - Klauke.....	C34	Chuck, Quick Change 7/16" Female to ½" Female.....	C43
20mm Cutter, ACSR/AL/CU - Klauke.....	C34	Chain Saw, Long Reach - Foam Filled.....	C44
25mm Cutter, ACSR/AL/CU - Klauke.....	C34	Tamper, Pole Hydraulic - Reliable.....	C45
32mm Cutter, AL/CU - Klauke.....	C35	Pole Pullers, Hydraulic.....	C46
50mm Cutter, AL/CU - Klauke.....	C35	56 Tonne Hydraulic Pole Puller.....	C46
5 Tonne Crimper & Cutter - Klauke.....	C36	22 Tonne Hydraulic Pole Puller.....	C46
Batteries, Chargers and Accessories.....	C37	Compression Test Gauge - 12 Tonne.....	C47
Makita 18V Charger.....	C37	Couplers, HP Hydraulic.....	C47
Klauke 10.8V Charger.....	C37	Hoses, Hydraulic.....	C47
Makita & Klauke Batteries.....	C37	Low Pressure Hydraulic Hoses - Twin-Line - NRP Jones.....	C47
Adaptor, Makita Platform to Milwaukee Battery.....	C37	High Pressure Hydraulic Hoses.....	C47
Tool Strap.....	C37	Pressure Gauge, In-line Flow.....	C47
Pumps, HP Hydraulic 700bar (10,000psi).....	C38	Punch Drivers - Punch & Dies.....	C48
Electric - Single Acting.....	C38	Punch Driver, Battery Powered - Greenlee.....	C48
Petrol - Double Acting - TESMEC.....	C38	Speed Punch & Dies - Greenlee.....	C49
Electric - Double Acting - TESMEC.....	C38	Speed Punch Knock-Out Kit - Metric ISO 16 - 40.....	C49
Battery Pump - Single Acting - Klauke.....	C39	Punch Driver, Hand Hydraulic.....	C50
Spiking/Cutting, Cable Systems - Klauke.....	C40	Punch Driver, Battery Powered - iToolco.....	C50
1000V Insulated Pump & Cutting Head - Remote Control..	C40	Punch Head, Hydraulic.....	C51
Pistol Style Cutters 65 & 105mm - Remote Controlled.....	C40	Keyway Punch - Hand operated - Greenlee.....	C51
Wrench, Hydraulic Impact - Low Pressure.....	C41		
Adaptor - 7/16" Hex to ½" Square Drive.....	C41		
"J" Hook Driver - Slot Socket PLUS.....	C41		

Klauke®

Crimping Tools, Battery Powered

12 Tonne Crimper - Klauke

Part No. EK12042FSCFM
**Australia OH&S
Pinch point free ram**


- Crimp range from 6 to 400mm²
- Head rotates 360°
- 2 speed unit which advances the dies at high speed until crimping force is encountered - then low speed to allow positioning of tool
- Manual return possible in all positions
- Bright LED illuminates work area
- Shock resistant plastic housing
- Accepts standard Australian and International 12 tonne die sets
- Makita 18V DC Lithium-Ion battery with high capacity output and quick charging time
- Battery level indicator
- Operating pressure 10,000PSI

Features

- C-Head with 42mm opening and wide crimping range up to 400mm²
- Crimps Lugs, Links, Full & Non-Tension sleeves to a variety of conductors, including Copper (CU), Aluminium (AL), ACSR, ABC and a variety of other cables
- All tool crimping data can be viewed on the tool LED display and can be read via Bluetooth connection

Order Information

Part No.	Description
EK12042FSCFM-O	Tool skin and case
EK12042FSCFM-K	Crimping Tool, 2 x 4.0Ah batteries, charger and case*

**Full Range of 12T Dies available
see pages C10 & C11**

- Visual and audible signals
- One-button operation, controlling all tooling functions
- Balanced centre of gravity for easy handling and effortless operations
- High-performance Makita 18V 4.0Ah Li-Ion battery* with high capacity for extended operating time
- Quick motor stop for high user safety
- Automatic retraction when operation is complete.
- Automatic Retraction Stop (ARS) for positioning control in case of multiple crimping

Crimps (mm ²)	Cu 400, Al 300, ACSR 185
Crimping Force (kN)	120
Stroke/Opening Width (mm)	42
Crimping Range (mm ²)	6 - 400
Charging Time (min)	36
Weight (kg)	7.1 including battery

* See page C37 for battery and charger information

12 Tonne Dies

Part No. K12-AF

- Crimping dies to suit battery, remote head and hand hydraulic 12T "C" type crimpers.
- Commonly referred to as "C" or "U" type dies.
- Dies colour coded to material type for easy identification.
- Across Flats diameter marked on die face for size identification on crimped lug or sleeve.



13.5 Tonne Crimper - Klauke

Part No. EK135FTCFM

Crimping Range
10 to 630mm²

- Crimp range from 10 to 630mm²
- Powerful crimping force of 13.5t
- All tool data can be viewed using on-tool display and i-press app

Features

- Makita battery system
- All data can be easily read via Bluetooth
- Closed Bolt interlock head, rotatable 360°
- Visual and audible signals
- One-button operating controlling all tool functions
- Automatic retraction after operation completed
- 2 stage hydraulic system with fast feed and power stroke
- Automatic retract stop saving time for multiple crimps
- Balanced centre of gravity
- LED for work area illumination
- LED display for showing tool data
- Battery charge and service display



Also suitable for 12T Dies with the below adaptor (included)



Part No. UA15T Die Adaptor Included

Crimps (mm²)	Cu 630, AL 500
Crimping Force (kN)	135
Stroke opening Width (mm)	50.8
Crimping Range (mm²)	10-630
Number of Crimps	approx. 85 at 240
Battery	Makita 18V 4.0Ah, Li-Ion*
Charging Time (min)	36
Weight (kg)	8.15 including battery

*See page C37 for battery and charger information

Note: 13.5T crimper will not crimp all AL lugs up to 500mm². Check with your lug/link manufacturer for specifications

Full Range of 12T Dies available - see pages C10 & C11

Order Information

Part No.	Description
EK135FTCFM-O	Tool skin, 12T Die Adaptor and case
EK135FTCFM-K	Crimping Tool, 12T Die Adaptor, 2 x 4.0Ah batteries, charger and case

Dies - 15 Tonne

Part No. VARIOUS

- Various styles available, compatible with most brand tools, contact TEN for more information

Copper

Part No.	Type	Across Flats (mm)	Size (mm ²)	Crimp Width (mm)
For 300 & 400mm ² CU Dies see equivalent 12T Dies on page C10 & C11				
K15-31.0-CU	Cu	31.0	500	7
K15-37.0-CU	Cu	37.0	630	7

Aluminium

Part No.	Type	Across Flats (mm)	Size (mm ²)	Crimp Width (mm)
K15-39.0-AL	Al	39.0	400/500	15



15T Crimping Dies

Klauke®

Takes 6T Round Dies

Interchangeable heads - easily change from crimping to cutting

Head Rotates 360°

Ergonomic single push button operation

LED Illumination of workspace

Genuine Makita Li-Ion Battery

Red LED display and acoustic signal in case of error

6T Dies available see page C9

5 Tonne Crimper & Cutter - Klauke

Part No. EK425CFM

- Suitable for ABC, 6 to 240mm² Cu & 10 to 300mm² Al
- One handed ergonomic design with single push button operation
- Automatic retraction once crimp is completed
- Auto-stop function
- LED Light Illuminates working space
- Red LED display and acoustic signal
- High performance 18V Lithium-Ion battery
- Crimp head rotates 360°
- Multi-functional LED indicates maintenance and battery control
- Manual retraction does not rely on battery power

Ideal for ABC

Order Information

Part No.	Description
EK425CFM-O	Tool skin and case
EK425CFM-K	Tool, 2 x 1.5Ah batteries, charger and case

**Multi-function
lightweight tool only
2.6kg**

Crimps (mm ²)	Cu/Al 240, ACSR 185
Crimping Force (kN)	50
Stroke/Opening Width (m)	40
No of crimps per charge	140 @ 70
Battery	Makita 18V, 1.5Ah, Li-ion*
Charging Time (min)	15
Weight (kg)	2.6 including battery

* See page C37 for battery and charger information

Available Interchangeable cutting heads

Part No.	Capacity (mm)	Length (mm)	Weight (kg)	Cuts
CJACSR	17.5 OD	145	1	ACSR/Steel
CJCU	20 OD	140	1	CU/AL



Also Available in 1000V Insulated Version - For more information see page C36

3.5 Tonne Crimper - Klauke

Part No. EK354CFM

- Crimps 6 to 150 mm²
- Slim design - ideal for confined spaces
- Tool data view on display and ipress app

Features

- All data can be easily read via Bluetooth
- Closed head, flip top style, rotatable 330°
- Visual and audible signals in case of error
- One-button controlling all tool functions

Order Information

Part No.	Description
EK354CFM-O	Tool skin and case
EK354CFM-K	Tool, 2 x 1.5Ah batteries, charger and case

- LED for work area illumination
- Always ready-to-use thanks to battery charge and service display
- Simple and safe: Automatic retraction when operation is complete

Crimping Force (kN)	35
Crimping Range (mm ²)	6-150
Stroke/Opening Width (mm)	9
Number of Crimps	approx. 145 at 120 Cu
Battery	Makita 18V 1.5Ah*
Charging Time (min)	15
Weight (kg)	2.4 including battery

* See page C37 for battery and charger information

Uses 4 Series interchangeable dies

Flip top
Head Rotates 360°

See page C9 for Series 4 Die information

Single push button operation

LED Illumination of workspace

Genuine Makita Li-Ion Battery

4 Tonne Square Crimper - Klauke

Part No. EKWF120ML

- Crimps 6 to 120mm²
- ARS means faster crimp cycles (Automatic Retraction Stop)
- All tool data in view thanks to display and ipress app

Features

- All data can be easily read via Bluetooth
- Open head, rotatable 330°
- Visual and audible signals
- One-button controlling all tool functions

Order Information

Part No.	Description
EKWF120ML-O	Tool skin and case
EKWF120ML-K	Tool, 2 x 2.5Ah batteries, charger and case

- LED for work area illumination
- Simple and safe: Automatic retraction when operation is complete
- Always ready-to-use thanks to battery charge and service display

Crimping Range (mm ²)	6 - 120
Stroke/Opening Width (mm)	19
Battery	Klauke 10.8V - 2.5Ah*
Charging Time (min)	45
Weight (kg)	1.96 including battery

"NO DIES" Required

Head rotates 350°

Single push button operation

LED Illumination of workspace

Klauke Li-Ion battery



Lightweight!
Less than
1 kg



*IS501 Die
Included with tool



50 Series Mini Crimper, Electromechanical - Klauke

Part No. EK50MLAU

- Lightweight Compact design
 - ideal for high volume work
 - switchboard manufacturers
 - automotive wiring harnesses
- High speed crimping time <1.5 seconds
- Automatic retraction

Order Information

Part No.	Description
EK50MLAU	Tool, case, battery, charger and IS501 die

Crimping Force (kN/T)	15/1.5
Crimping Range (mm ²)	0.1 - 50
Crimping Time (s)	<1.5
Battery	Klauke 1.5Ah/10.8V Li-ion (RAML)*
Crimps per Charge	300 @ 10 Cu
Charging Time (min)	40
Weight (kg)	0.96 incl. battery

* See page C37 for battery and charger information

Contact TEN for a list of available Series 50 Crimping Dies

Kit Included

Part No.	Description
RAML	1.5Ah, 10.8V Battery
LGML1AU	230V Charger for Klauke Batteries
*IS501	Series 50 Die 0.5 to 6mm ²



Battery (RAML)



Charger (LGML1AU)

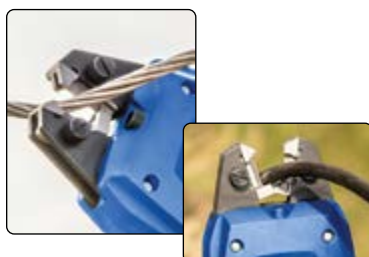


Die *IS501 for RYB terminals



Protective Carry Case

Cutting Die Part No. S502



Scan or Click the QR Code to view video



Order Information

Part No.	Description	Jaw opening (mm)	Capacity (mm)
S502	Cutting Die	19	CU-6.5 / ACSR-5.0

Klauke® Lite

12 Tonne Crimper - LITE

Part No. EK12642FSAP



LED Illumination of workspace



12T Dies available - see pages C10 & C11

Features

- 42mm opening allows a crimp range from 6 to 400mm²
- Crimps Lugs, Links, Full & Non-Tension sleeves to a variety of conductors
- Bright LED illuminates work area
- Shock resistant plastic housing with rubber ANTI-SLIP Grip
- Accepts standard Australian & International 12 tonne dies
- Battery level indicator (on battery)
- Operating pressure 10,000PSI
- Visual signals when pressure is reached
- One-button operation, controlling all tooling functions
- Automatic retraction when operation is complete.
- Manual retract button
- Balanced centre of gravity for easy handling and effortless operations

Order Information

Part No.	Description
EK12642FSAP-O	Tool skin and case
EK12642FSAP-K	Crimping Tool, 2 x 4.0Ah batteries, charger and case

Specifications

Crimps (mm ²)	Cu 400, Al 300, ACSR 185
Crimping Force (kN)	120
Stroke/Opening Width (mm)	42
Crimping Range (mm ²)	6 - 400
Charging Time (min)	36
Weight (kg)	6.7 including battery

5.5 Tonne Crimper - Indent - Klauke

Part No. EK60VPCFM

- Crimps 10 to 240mm²
- Crimps optimised at all times due to the patented centering system
- All tool data in view thanks to display and ipress app

Features

- All data can be easily read via Bluetooth
- Quad-point indent crimping feature, no dies required
- Visual and audible signals
- One-button controlling all tool functions

Order Information

Part No.	Description
EK60VPCFM-O	Tool skin and case
EK60VPCFM-K	Tool, 2 x 4.0Ah batteries, charger and case*

- Open head, rotatable
- LED light
- Ergonomic balanced centre of gravity
- Fast 2-stage hydraulic system
- Automatic retraction when operation is complete

Crimping Force (kN)	55
Crimping Range (mm ²)	10-240
Charging Time (min)	36
Weight (kg)	4.8 including battery

* See page C37 for battery and charger information



No Separate Dies required

Dies, Various

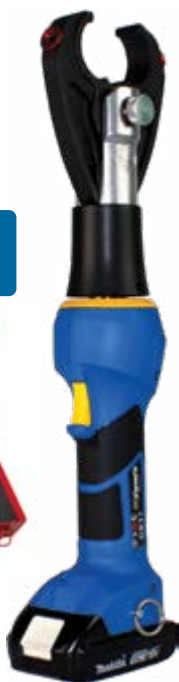
6 Tonne Dies Suits EK425CFM



6 Tonne Die Kits
available



18 Compartment
Metal Die Box
Part No. K12-CASE-MB



Series 4 Dies Suits EK354CFM



Cembre Style Dies Suits EK50CFM

*Tool no longer available



MB52-50
Cutting Die



Cembre
Style Die



Part No.	Size (mm ²)	Across Flats (mm)	Crimp Width (mm)
Copper			
K6-04.4-CU	6	4.4	5.0
K6-05.7-CU	10	5.7	5.0
K6-06.3-CU	16*	6.3	6.0
K6-07.7-CU	25*	7.7	12.0
K6-09.2-CU	35*	9.2	12.0
K6-10.4-CU	50*	10.4	9.0
K6-11.5-CU	70*	11.5	9.0
K6-14.2-CU	95*	14.2	6.0
K6-16.5-CU	120*	16.5	6.0
K6-18.3-CU	150*	18.3	5.0
K6-20.0-CU	185*	20.0	5.0
K6-23.1-CU	240*	23.1	5.0
K6CUSET-16-240	* 16 to 240 (10 Dies) including 20 compartment metal box		

Aluminium

K6-09.0-AL	10-35	9.0	5.0
K6-13.2-AL	50-70	13.2	12.0
K6-17.3-AL	95-120	17.3	12.0
K6-18.0-AL	150	18.0	12.0
K6-22.0-AL	150-185	22.0	9.0
K6-28.4-AL	240-300	28.4	5.0

ABC

K6-14.0-ABC	25	14.0	9.0
K6-17.3-ABC	35-70	17.3	9.0
K6-21.5-ABC	95-150	21.5	9.0

Part No.	Size (mm ²)	Across Flats (mm)	Crimp Width (mm)
Copper			
K3.5-C6	6	4.4	5.0
K3.5-C10	10	5.7	5.0
K3.5-C16	16	6.3	5.0
K3.5-C25	25	7.7	5.0
K3.5-C35	35	9.2	5.0
K3.5-C50	50	10.4	5.0
K3.5-C70	70	11.5	5.0
K3.5-C14	Insulated Sleeve	14.0	5.0
K3.5-C95	95	14.2	5.0
K3.5-C120	120	16.5	5.0
K3.5-C150	150	18.3	5.0

Aluminium K3.5 Dies available - Contact TEN for further information

Part No.	Size (mm ²)	Across Flats (mm)	Die Style
Copper			
M57-50	10	5.7	Cembre
M63-50	16	6.3	Cembre
M77-50	25	7.7	Cembre
M92-50	35	9.2	Cembre
M104-50	50	10.4	Cembre
M115-50	70	11.5	Cembre
M142-50	95	14.2	Cembre
M165-50	120	16.5	Cembre
M200-50	185	20.0	Cembre

ABC

M173-50	35-70	17.3	Cembre
M215-50	95-150	21.5	Cembre

Cutting Die

MB52-50	Cutting Die	10.0	Cembre
---------	-------------	------	--------

12 Tonne Dies, Aluminium - K12 Series

Aluminium

Part No.	Size (mm ²)	Across Flats (mm)	Crimp Width (mm)
K12-09.0-AL	6-35	9.0	22.0
K12-13.2-AL	50-70	13.2	22.0
K12-17.3-AL	95-120	17.3	22.0
K12-22.0-AL	150-185	22.0	18.0
K12-28.4-AL	240-300	28.4	18.0

Overhead

K12-14.0-AL	7/2.25	14.0	22.0
K12-14.5-AL	7/2.50	14.5	22.0
K12-14.8-AL	19/2.00-19/2.11	14.8	22.0
K12-18.0-AL	7/3.00-7/3.75	18.0	22.0
K12-19.0-AL	7/4.50	19.0	22.0
K12-22.0-AL	19/3.25	22.0	18.0
K12-25.4-AL	19/3.75 Cabac	25.4	18.0
K12-26.2-AL	19/3.75 Utilux	26.2	18.0
K12-30.3-AL	19/4.75	30.3	18.0

ABC

K12-14.0-ABC	10-35	14.0	9.0
K12-17.3-ABC	50-70	17.3	9.0
K12-21.5-ABC	95-120-150	21.5	9.0

Special

K12-16.6-AL	SPECIAL	16.6	22.0
K12-21.5-AL	SPECIAL	21.5	18.0
K12-23.1-AL	SPECIAL	23.1	18.0
K12-24.2-AL	SPECIAL	24.2	18.0
K12-24.9-AL	SPECIAL	24.9	18.0
K12-25.0-AL	SPECIAL	25.0	18.0
K12-30.0-AL	SPECIAL	30.0	18.0

Steel

K12-06.8-ST	Inner Steel ACSR	6.8	10
K12-07.5-ST	Inner Steel ACSR	7.5	10
K12-09.5-ST	Inner Steel ACSR	9.5	10



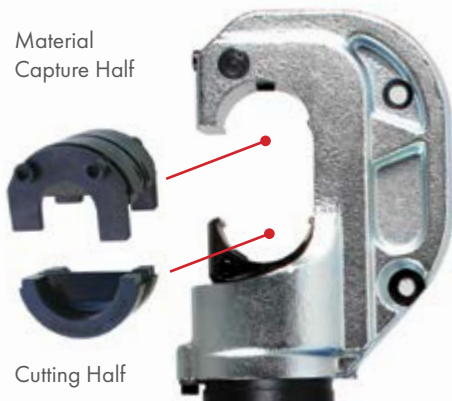
Aluminium Die



ABC Die

Custom 12 Tonne Die Kits available. Contact TEN for further information

Material Capture Half



Cutting Half

12 Tonne Cutting Die

Part No. 00949

Material	Size (mm) OD
Guy Wire/Soft Steel/ Steel Rod	16.0
ACSR/AL/CU	17.5

Features

- Can be used on all 12 Tonne "C-Head" style Crimpers
- Heavy duty design

Benefits

- Lower cost than standard dedicated cutting tools



Suitable for all brands of 12T battery, manual and remote head hydraulic compression tools

12Tonne Manual Crimper
Part No. HK12042



12Tonne Battery Crimper
Part No. EK12042FSCFM



12Tonne Crimp Head
Part No. TP-420H



Please Note: This die selection chart is produced as a guide only. Please check with your Lug/Link manufacturer for AF sizes and tonnage.

12 Tonne Dies, Copper - K12 Series

Copper

Part No.	Size (mm ²)	Across Flats (mm)	Crimp Width (mm)
K12-04.4-CU	6	4.4	6.35
K12-05.7-CU	10	5.7	6.35
K12-06.3-CU	16*	6.3	17.5
K12-07.7-CU	25*	7.7	17.5
K12-09.2-CU	35*	9.2	17.5
K12-10.4-CU	50*	10.4	17.5
K12-11.5-CU	70*	11.5	17.5
K12-14.2-CU	95*	14.2	17.5
K12-16.5-CU	120*	16.5	14.0
K12-18.3-CU	150*	18.3	14.0
K12-20.0-CU	185*	20.0	14.0
K12-23.1-CU	240*	23.1	10.0
K12-26.0-CU	300*	26.0	10.0
K12-28.1-CU	400*	28.1	10.0

Copper Die Set * Indicates Dies included in the set below

K12CUSET-16-400	16mm ² to 400mm ² (12 Dies) Including 18 Compartment Metal Box
K12CUSET16-400NB	16mm ² to 400mm ² (12 Dies) No Box

Overhead

K12-08.3-CU	7/1.63 & 7/1.70	8.3	9.0
K12-09.2-CUOH	7/2.00 - 7/2.03	9.2	9.0
K12-11.5-CUOH	7/2.62	11.5	9.0
K12-13.0-CU	37/.064 - 19/2.11	13.0	17.5
K12-13.2-CU	19/1.70	13.2	17.5
K12-14.8-CU	19/2.00 - 19/2.11	14.8	9.0
K12-19.3-CU	19/2.75	19.3	14.0

Special

K12-08.2-CU	SPECIAL	8.2	9.0
K12-19.0-CU	SPECIAL	19.0	22.0
K12-22.0-CU	SPECIAL	22.0	10.0
K12-CSFLAT9	FLAT Face half only	**Determined by lug size	9.9

** Contact Lug manufacturer for hex half dimensions

Copper Screen

Part No.	Across Flats (mm)	Crimp Width (mm)
K12-07.5-CS	7.5	16.0
K12-12.7-CS	12.7	14.0
K12-14.0-CS	14.0	18.0

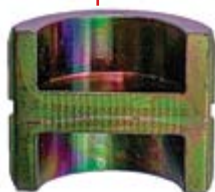


Copper Die

12 Tonne Die Kits available
Contact TEN
for further information



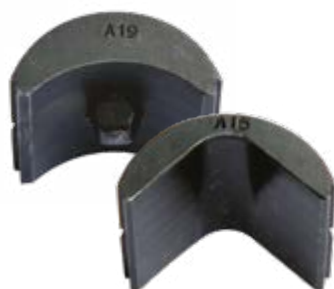
18 Compartment Metal Die Box
Part No. K12-CASE-MB



Flat Face Half
K12-CSFLAT9

Please Note: These die selection charts are produced as a guide only. Please check with your Lug/Link manufacturer for AF sizes and tonnage.

See following pages for a full range of
Nest & Indent Copper Earth Connector Dies



12 Tonne Nest and Indent Dies - K12 Series

Used for crimping Under Ground sector cable Lugs and Links

Select the die half combination according to the chart below

Nest Die Halves



K12-ANEST12



K12-ANEST14



K12-ANEST15

Indent Die Halves



K12-AINDENT-16



K12-AINDENT-18

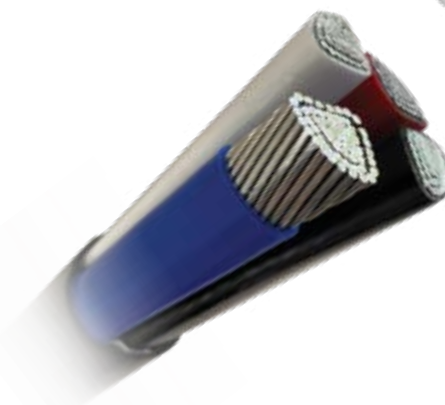


K12-AINDENT-19

Example Sector Cable Lug & Links



K12-ANEST15 & K12-AINDENT-19
Combination (Sold Separately)



4 Core AL Sector
UG Cable



K12-ANEST12 & K12-AINDENT-16
Combination (Sold Separately)

Ordering information

Conductor Size (mm ²)	3 Core AL Sector Cable		Conductor Size (mm ²)	4 Core AL Sector Cable	
	Nest Part No.	Indent Part No.		Nest Part No.	Indent Part No.
120mm ²	K12-ANEST12	K12-A-INDENT-16	120mm ²	K12-ANEST14	K12-A-INDENT-16
150mm ²	K12-ANEST12	K12-A-INDENT-18	150mm ²	K12-ANEST14	K12-A-INDENT-18
185mm ²	K12-ANEST12	K12-A-INDENT-18	185mm ²	K12-ANEST15	K12-A-INDENT-18
240mm ²	K12-ANEST12	K12-A-INDENT-19	240mm ²	K12-ANEST15	K12-A-INDENT-19
300mm ²	K12-ANEST12	K12-A-INDENT-19	300mm ²	K12-ANEST15	K12-A-INDENT-19

NOTE: Sector Rounding Dies available - Contact TEN for further information

Please Note: This die selection chart is produced as a guide only. Please check with your connector manufacturer for confirmation of die type & size.

12 Tonne Copper Earth Connector Dies - K12 Series

Selecting the correct "C" type earth connector Compression Die is directly related to the style of "C" connector and the sizes of copper earth wire and/or earth rod being connected. Below are the most common types of "C" Connectors and the corresponding 12T Dies. These connectors are specifically designed for applications requiring corrosion resistant, high current jointing or tapping of buried copper earth grids, or to earth rods in zone substation and for pole and pad mounted transformers, therefore die selection is extremely important. The most common ranges of connectors are typically dimensionally identical in the Australian market.

Dies for "C" Style Earthing Connectors

12T Die Part No. Die	Cable (mm ²)	Tap (mm ²)	Connector
K12-U997	95	70	"C" Style
	95	95	
	70	70	
	70	95	

Dies for "E" Style Earthing Connectors

12T Die Part No. Die	Cable (mm ²)		Tap (mm ²)		Connector
K12-UO	35		35		"E" Style
	35		50		
	50		50		
	70		50		
	70		70		
K12-U997	95		120		"E" Style
	95		95		
	120		120		
	70		95		
	70		120		
K12-UC	10		35		"E" Style Wide Jaw
K12-UO	35		70		
K12-U997	95		120		
K12-U1011	150		240		
12T Die Part No. Die	Min	Max	Min	Max	Connector
K12-UO	35	70	10	35	"E" Style Multi-Fit
K12-U997	95	120	10	70	
K12-U1011	150	240	10	70	
	150	240	95	120	

Dies for "6" Style Earthing Connectors

12T Die Part No. Die	Earth Rod (mm)	Tap (mm ²)	Connector
K12-U997	13-15	16	"6" Style
		25	
		35	
		50	
		70	
		95	
		120	

Corresponding Dies Part No's for "C" Connector Manufacturers

TEN Part No.	Fulton Ind/Burndy Part No.	Cabac Part No.	TE/Dulmison
K12-U1011	U1011	HT130-C1011	DU1315
K12-U997	U997	HT130-C997	
K12-UC	UC	HT130-CC	DUOT
K12-UO	UO	HT130-CO	

Please Note: This die selection chart is produced as a guide only. Please check with your connector manufacturer for confirmation of die type.

* Images are a guide only and may not represent actual connector.

Klauke®



HK6022



HK12042



REL-510

Crimpers, Hand Operated - Hydraulic

6 & 12 Tonne Crimpers, Hand Operated - Hydraulic

- Two stage double acting hydraulics
- Manual pressure release at any stage
- Ram extends during up & down operation
- Tools supplied with case

Part No.	HK6022	HK12042	REL-510
Head Rotation	360°	360°	180°
Crimping Force (T)	6	12	10.8
Pressure (PSI)	10,000	10,000	10,000
Safety Valve	Yes	Yes	Yes
Length (mm)	460	560	635
Max Crimp (mm²)			
Cu	300	400	380
Al	240	240	380
Specific Features	Auto-Retract, Locking Handle Mechanism	Auto-Retract, Locking Handle Mechanism	Magnetic Reservoir Traps Contaminants
Accepts Die Type	Standard 6 T "C" / "U" Type dies	Standard 12 T "C" / "U" Type dies	Standard 12 T "C" / "U" Type dies
Storage Device Supplied	Steel Box with Die Compartments	Steel Box with Die Compartments	Steel Box with Die Compartments
Weight (kg)	3.3	5.9	6.6

See page C38 for Hydraulic Pumps & page C47 for Hoses



LOW PRESSURE

Crimpers, Remote Head - Hydraulic

12 Tonne Crimpers, Remote Head - Hydraulic

	12T Crimping Head	Multi Head	12T Crimping Head
Part No.	TP-420H	PK60UNVC	LPK1240-A
Force (T)	12	6	12
Head Type	"C"	Flip Top	"C"
Pressure (PSI)	10,000	10,000	2,250
Jaw Opening (mm)	42	42	42
Length (mm)	302	350	515
Accepts Die Type	Standard 12T "C" / "U"	Standard 6T "C" / "U"	Standard 12T "C" / "U"
Die Capacity (mm²)			
Cu	400	240	400
Al	300	300	300
Specific Features	Easy access die retaining Pin	See Page C31 for Multi Tool adaptors	Low Pressure
Weight (kg)	4.4	2.4	8.9

25 Tonne Crimp Head - Single Acting - Klauke

Part No. HP25T-SA

- Crimps CU to 630mm² & AL to 500mm²
- Twist-lock die retaining pin hold die in place
- Strap on pin prevents loss of die retainer
- High Pressure Coupler included



Force (T)	25
Head Type	"U"/"H"
Pressure (PSI)	10,000
Length (mm)	335
Accepts Die Type	25T Dies
Weight (kg)	5.3
Die Capacity (mm ²)	
Cu	630
Al	500

25 Tonne Dies

Aluminium Dies

Part No.	Type	Across Flats (mm)	Conductor	Crimp Width (mm)
K25-30.0-AL	Al	30.0	19/3.75 AAAC	25
K25-39.0-AL	Al	39.0	400/500	25

Copper Dies

Part No.	Type	Across Flats (mm)	Conductor	Crimp Width (mm)
K25-18.3-CU	Cu	18.3	150	16.0
K25-20.0-CU	Cu	20.0	185	16.0
K25-23.1-CU	Cu	23.1	240	16.0
K25-26.0-CU	Cu	26.0	300	16.0
K25-28.1-CU	Cu	28.1	400	16.0
K25-31.0-CU	Cu	31.0	500	16.0
K25-37.0-CU	Cu	37.0	630	12.2

ACSR Dies

Part No.	Type	Across Flats (mm)	Crimp Width (mm)	Conductor
K25-28.5-AL	ACSR	28.5	27.0	30/7/2.50 GRAPE

ACSR Dies Inner Steel Dies

Part No.	Type	Across Flats (mm)	Crimp Width (mm)	Conductor
K25-16.0-ST	ACSR	16.0	17.0	Inner for GRAPE

Rounding Dies

Part No.	Type	Rounding Dia (mm)	Conductor (mm ²)	Crimp Width (mm)
K25-22.5-CU	Cu	22.5	300	40
K25-26.0-CU-RD	Cu	26.0	400	40
K25-29.0-CU	Cu	29.0	500	40

25T to 12T Die Adapter

Part No.	Description
AU230-130D	Adaptor for 25T crimpers to suit 12T Dies

See pages C10 & C11 for 12T Dies

Please Note: This die selection chart is produced as a guide only.
Please check with your Lug/Link manufacturer for AF sizes and tonnage.



25T Crimping Dies



12T Die
Adaptor

45 Tonne Crimp Head - Single Acting

Part No. HP45T-SA-A

This lightweight head is utilised for crimping larger overhead joints, terminations and underground lugs or connectors.

(Supplied with leather die locating pin strap - not a carry handle)



Features

- High pressure 10,000PSI, Single Acting
- Spring Return
- 20mm Stroke
- Quick coupler for easy disassembly
- Dimensions 360 x 175 x 210mm
- Crimping capacity
 - Cu: 800mm²
 - Al: 630mm²
 - Steel: AF Ø 20mm

Output Force (T)	45
Crimping Capacity (mm ²)	800 Cu/630 Al
Working Pressure (PSI)	10,000
Weight (kg)	11.0

45 Tonne Dies

Aluminium

Part No.	Across Flats (mm)	Conductor	Crimp Width (mm)
K45-28.3-AL	28.3	240/300	50.0
K45-39.0-AL	39.0	400/500	50.0
K45-43.2-AL	43.2	630	50.0

ACSR/AAC/AAAC

Part No.	Across Flats (mm)	Conductor	Crimp Width (mm)
K45-22.0-AL	22.0	ACSR/AAC/AAAC	50.0
K45-28.5-AL	28.5	ACSR/AAC/AAAC	50.0
K45-30.0-AL	30.0	ACSR/AAC/AAAC	50.0
K45-34.5-AL	34.5	ACSR/AAC/AAAC	50.0
K45-40.0-AL	40.0	ACSR/AAC/AAAC	50.0
K45-44.5-AL	44.5	ACSR/AAC/AAAC	50.0
K45-47.5-AL	47.5	ACSR/AAC/AAAC	50.0
K45-48.0-AL	48.0	ACSR/AAC/AAAC	45.0

Inner Steel - ACSR

Part No.	Across Flats (mm)	Conductor	Crimp Width (mm)
K45-9.5-ST	9.5	Inner Steel	19.0
K45-16.0-ST	16.0	Inner Steel	19.0
K45-17.0-ST	17.0	Inner Steel	19.0
K45-19.0-ST	19.0	Inner Steel	19.0
K45-18.0-ST	18.0	Inner Steel	19.0
K45-20.0-ST	20.0	Inner Steel	19.0

Copper

Part No.	Across Flats (mm)	Conductor	Crimp Width (mm)
K45-23.1-CU	23.1	240	25.0
K45-26.0-CU	26.0	300	25.0
K45-28.1-CU	28.1	400	25.0
K45-31.0-CU	31.0	500	25.0
K45-37.0-CU	37.0	630	25.0
K45-43.2-CU	43.2	800	25.0



45T Copper Die



45T Aluminium Die

Please Note: This die selection chart is produced as a guide only. Please check with your Lug/Link manufacturer for AF sizes and required tonnage.

60 Tonne - Crimp Head - Single Acting

Part No. HP60TC-SA

Lightweight, single acting 60T press head/crimper for use with standard 60T C Dies

Features

- Crimping capacity Cu/Al 1000mm²
- Crimping capacity Steel AF Ø 26mm High pressure 10,000PSI, Single Acting
- Spring Return
- Quick coupler for easy disassembly
- Top of the head rotates 90 degrees and can be lifted off to remove completed connection

Output Force (T)	60
Working Pressure (PSI)	10,000
Crimping Capacity	Cu/Al 1000 mm ² & Steel 26mm Across Flats
Crimping Stroke (mm)	60.0
Length (mm)	450
Weight (kg)	30.5
Storage	Steel case

60 Tonne Dies

- Commonly referred to as "C" or "U" type dies
- Rectangular Dies also available

Copper

Part No.	Type	Conductor	Across Flats (mm)	Width (mm)
K60-23.1-CU	Cu	240	23.1	25.0
K60-26.0-CU	Cu	300	26.0	25.0
K60-28.1-CU	Cu	400	28.1	25.0
K60-31.0-CU	Cu	500	31.0	25.0
K60-37.0-CU	Cu	630	37.0	25.0
K60-43.2-CU	Cu	800	43.2	25.0
K60-48.0-CU	Cu	1000	48.0	25.0

Aluminium

Part No.	Type	Conductor	Across Flats (mm)	Width (mm)
K60-28.3-AL	Al	240-300	28.3	50.0
K60-39.0-AL	Al	400-500	39.0	50.0
K60-43.2-AL	Al	630	43.2	50.0
K60-52.5-AL	Al	800-1000	52.5	40.0

AAC/AAAC/ACSR

Part No.	Type	Across Flats (mm)	Width (mm)
K60-28.5-AL	Al	28.5	50.0
K60-34.5-AL	Al	34.5	50.0
K60-40.0-AL	Al	40.0	50.0
K60-44.5-AL	Al	44.5	50.0
K60-47.5-AL	Al	47.5	45.0
K60-48.0-AL	Al	48.0	45.0

ACSR Steel Inner

Part No.	Type	Across Flats (mm)	Width (mm)
K60-16.0-ST	Steel Inner	16.0*	19.0
K60-17.0-ST	Steel Inner	17.0	19.0
K60-18.0-ST	Steel Inner	18.0	19.0
K60-19.0-ST	Steel Inner	19.0	19.0

*16mm AF 60T steel die suitable for AMOKABEL



60T Aluminium Die



60T Steel Die

Please Note: This die selection chart is produced as a guide only. Please check with your Lug/Link manufacturer for AF sizes and required tonnage.

TESMEC

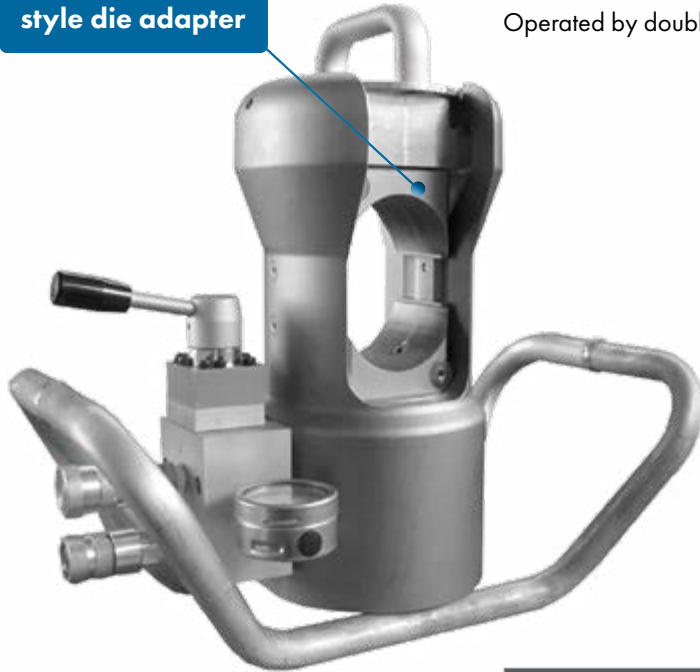
100 Tonne Crimp Head - Double Acting - TESMEC

Part No. PRT510

Lightweight, double acting high pressure 100T press head/crimper for use with 100T Dies. Includes Directional Valve and pressure gauge, which allows the operator to control the crimp at the crimp head.

Operated by double acting hydraulic pump.

Part No. PRT510
Shown with "C"
style die adapter



See page C19 for 100T Dies

Features

- Excellent power/weight ratio
- Very short pressing cycle
- Includes adaptor for Izumi Dies

Lightweight

See page C19 for 100T Dies

Output Force (T)	100
Rated Pressure (PSI)	10,000
Crimping Capacity (mm ²)	Max Cu/Al 1000 Max Steel AF 36(mm)
Dimensions (mm)	480H x 255W x 405L
Weight (kg)	34.5 Including Valve & Frame

See page C38 for TESMEC Double Acting Hydraulic Pumps

100 Tonne Crimp Head - Double Acting

Part No. HP100T-DA-A

Double acting high pressure 100T press head/crimper for use with 100T Dies



Features

- High pressure 10,000PSI, Double Acting Hydraulic
- Accepts 100T Izumi Style Dies
- Quick couplers for easy hydraulic assembly and disassembly
- Top of the head rotates 90 degrees and can be lifted off to remove completed connection



Output Force (T)	100
Rated Pressure (PSI)	10,000
Crimping Capacity (mm ²)	Max Cu/Al 1000 Max Steel AF 36(mm)
Weight (kg)	31 Crimp body only
Packing	Steel case



100 Tonne Crimp Head - Single Acting

Part No. HP100T-SA

- Single acting crimping head for connection with hydraulic drive units
- Crimps cable lugs and connectors of up to a maximum cross section of 1600mm²
- The nickel plated surface of the crimping head is resistant against environmental conditions
- Quick coupling
- Robust and compact design
- Lightweight with excellent stability even under load

Crimping Capacity (mm ²)	Up to 1600
Output Force (T)	100
Rated Pressure (PSI)	10,000
Stroke (mm)	25
Weight (kg) without dies	27
Weight with dies (kg)	33

100 Tonne Dies

- Commonly referred to as "C" or "U" type dies
- Rectangular Dies also available

Aluminium

Part No.	Type	Across Flats (mm)	Crimp Width (mm)
K100-21.0-AL	Al	21.0	75.0
K100-25.6-AL	Al	25.6	75.0
K100-28.3-AL	Al	28.3	75.0
K100-28.5-AL	Al	28.5	75.0
K100-30.0-AL	Al	30.0	75.0
K100-34.5-AL	Al	34.5	75.0
K100-36.22-AL	Al	36.22	75.0
K100-37.0-AL	Al	37.0	75.0
K100-39.0-AL	Al	39.0	75.0
K100-40.0-AL	Al	40.0	75.0
K100-40.21-AL	Al	40.21	75.0
K100-43.2-AL	Al	43.2	75.0
K100-44.5-AL	Al	44.5	75.0
K100-47.5-AL	Al	47.5	75.0
K100-48.0-AL	Al	48.0	75.0
K100-49.71-AL	Al	49.71	75.0

Steel

Part No.	Type	Across Flats (mm)	Crimp Width (mm)
K100-07.5-ST	Steel Inner	7.5	35.0
K100-09.5-ST	Steel Inner	9.5	35.0
K100-11.0-ST	Steel Inner	11.5	35.0
K100-16.0-ST	Steel Inner	16.0*	35.0
K100-17.0-ST	Steel Inner	17.0	35.0
K100-18.0-ST	Steel Inner	18.0	35.0
K100-19.0-ST	Steel Inner	19.0	35.0
K100-20.0-ST	Steel Inner	20.0	35.0
K100-20.22-ST	Steel Inner	20.22	35.0
K100-26.0-ST	Steel Inner	26.0	35.0

*16mm AF 100T steel die suitable for AMOKABEL

Please Note: This die selection chart is produced as a guide only. Please check with your Lug/Link manufacturer for AF sizes and tonnage.



100T Aluminium Die

Custom Sizes available upon request



Cutters Selection Matrix

CUTTER PART No.	DESCRIPTION	Page No.	JAW OPENING	CONTAINER SEAL	BARE AL/CU	ACSR	GUY WIRE	WIRE ROPE	REBAR GROUND ROD	CABLE TRAY SOFT STEEL	SWA
BATTERY											
EBS6LGKS	Bolt Cutter	C21	6	✓					✓	✓	
EBS8CFM	Bolt Cutter	C21	8	✓					✓	✓	
EBS12CFM	Bolt Cutter	C21	12	✓					✓	✓	
ES20CFM/ ES20ISM/ ES20RMCCFM	Scissor Style Cutter	C22 / C34 / C22	20		✓	✓					
ESG25CFM	Guillotine Style Cutter	C23	25		✓	✓	✓		✓	✓	✓
ESM25CFM/ ESM25ISM	Parrot Beak style Cutter	C23 / C34	25		✓	✓					
ES32CFM/ ES32ISM/ ES32RMCCFM	Scissor Style Cutter	C24 / C35 / C24	32		✓						
ESGM452CFM	Guillotine Style Cutter	C25	45		✓	✓	✓		✓	✓	✓
ESG45CFM	Guillotine Style Cutter	C25	45		✓	✓	✓		✓	✓	✓
ESM50CFM/ ESM50ISM	Parrot Beak style Cutter	C26 / C35	50		✓						
ESG55CFM	Guillotine Style Cutter	C26	55		✓	✓	✓		✓	✓	✓
ESST55AP-AL	Ratchet Style Cutter	C27 & H6	55		✓	✓					
ESU55AP-AL	Ratchet Style Cutter	C27 & H6	55		✓						
RCB-50Y	Ratchet Style Open Jaw Cutter	C27 & H6	50		✓						
RCB-65N	Ratchet Style Cutter	C27 & H6	65		✓						
ESG65RMCCFM	Guillotine Style Safety Cutter	C40	65		✓	✓	✓		✓	✓	✓
ES85CFM	Parrot Beak style Cutter	C28	85		✓						
ESG85CFM	Guillotine Style Cutter	C28	85		✓						✓
ES105CFM	Parrot Beak style Cutter	C28	105		✓						✓
ESG105CFM/ ESG105RMCCFM	Guillotine Style Cutter & Safety Cutter	C28 / C40	105		✓						✓
EK425ISM EK425CFM	CJACSR	Parrot Beak style Cutter Attachment	C36	17.5		✓					
	CJCU	Parrot Beak style Cutter Attachment	C6	20		✓					
EK120UNVCFM EK60UNVCFM EKM60UNVCFM	UCACSR	Guillotine Style Cutter Attachment	C31	40		✓					
	UC40	Guillotine Style Cutter Attachment	C32	40		✓					
HAND HYDRAULIC											
HC-20A	Guillotine Style Cutter	C29	20		✓	✓	✓	✓	✓	✓	
REL-58MC	Guillotine Style Cutter	C29	25		✓	✓	✓	✓	✓	✓	
HC-40A	Guillotine Style Cutter	C29	40		✓	✓	✓	✓	✓	✓	
REMOTE HEAD - HYDRAULIC											
SDG45C	Guillotine Style Cutter	C29	45		✓	✓					
SDG852C	Guillotine Style Cutter	C29	85		✓						✓
SDK85C	Parrot Beak style Cutter	C29	85		✓						✓
SDG105C	Guillotine Style Cutter	C29	105		✓						✓
RATCHET HAND											
9009	Ratchet Style Cutter	H5 (Hand Tools)	18		✓	✓				✓	
63607	Ratchet Style Cutter	H5 (Hand Tools)	22		✓	✓				✓	
RC-32ACSR	Ratchet Style Cutter	H5 (Hand Tools)	32		✓	✓				✓	
K1062	Ratchet Style Cutter	H5 (Hand Tools)	52		✓						
K683T	Ratchet Style Cutter	H5 (Hand Tools)	32		✓						
REL-R-HC	Ratchet Style Parrot Beak Cutter	H5 (Hand Tools)	30		✓	✓					
REL-R-SC	Ratchet Style Parrot Beak Cutter	H5 (Hand Tools)	50		✓	✓					
HAND											
Various	Cable, Bolt & Side Cutters	H7 (Hand Tools)	-		✓					✓	

Cutters - Battery Powered

6, 8 & 12mm Bolt Cutters - Klauke

Features

- Makita battery system
- All data can be easily read via Bluetooth
- Open head, rotatable 330°
- One-button controlling all tool functions

Part No. EBS6LGKS

- Burr-free cutting
- The cut is made in less than 1 second
- Maintenance required only after 20,000 cuts (renew hydraulic shock absorber system)
- Always ready to cut thanks to easily replaceable blades

- Ergonomic balanced centre of gravity
- LED for work area illumination
- LED display for showing tool data
- Battery charge and service display

Order Information

Part No.	Description
EBS6LGKS-O	Tool skin and case
EBS6LGKS-K	Tool, 2 x 1.5Ah batteries, charger and case

SCAN or CLICK
to View Operation
Video



Part No. EBS8CFM

- For cutting cable trays, bolts and medium-hard steel wire
- Ideal in confined areas: narrow cutting head
- All tool data can be viewed using on-tool display and i-press app

Order Information

Part No.	Description
EBS8CFM-O	Tool skin and case
EBS8CFM-K	Tool, 2 x 1.5Ah batteries, charger and case

SCAN or CLICK
to View Operation
Video



Part No. EBS12CFM

- For cutting, shipping container seals, cable trays, bolts and medium-hard steel wire
- Ideal in confined areas: narrow cutting head
- All tool data can be viewed using on-tool display and i-press app

Order Information

Part No.	Description
EBS12CFM-O	Tool skin and case
EBS12CFM-K	Tool, 2 x 1.5Ah batteries, charger and case

Part No.	Cutting Force (kN)	Cutting Range (mm)	Cutting Time (s)	No. of Cuts	Battery	Charging Time (min)	Weight (kg)
EBS6CFM	24	Max 6 dia.	approx. 1 (depending on material thickness)	approx 300 for bolts 5mm diameter	Makita 18V 1.5Ah, Li-Ion*	15	1.9 including battery
EBS8CFM	15	Max 8 dia.					1.55 including battery
EBS12CFM	45	Max 12 dia.					2.05 including battery

* See page C37 for battery and charger information



Burr-free
cutting of
wire cable
tray



FAST Ideal
for cutting
cable tray



Ideal
for cutting
shipping
container
seals



Klauke®

20mm Cutter, ACSR/AL/CU - Klauke

Part No. ES20CFM

- For cutting Al/St conductors (ACSR), solid Cu cables and laminated copper bus bars
- Extremely robust design and lightweight
- Slim cutting head - ideal when space is critical
- All tool data can be viewed using on-tool display and i-press app

Features

- Makita battery system
- All data can be easily read via Bluetooth
- One-button controlling all tool functions
- Ergonomic balanced centre of gravity
- Open head, rotatable 330°

Technical Data

Cutting Force (kN)	23
Cutting Range (mm)	Max 20 dia. dependent on cable type
Battery	Makita 18V 1.5Ah, Li-Ion*
Charging Time (min)	15
Weight (kg)	2.15 including battery

* See page C37 for battery and charger information

Order Information

Part No.	Description
ES20CFM-O	Tool skin and case
ES20CFM-K	Tool, 2 x 1.5Ah batteries, charger and case

- LED Display
- Automatic retraction when operation is complete
- LED for work area illumination
- Visible and audible signals
- Battery charge and service display

Compact
Ideal for confined work areas
i.e switchboard & domestic UG pits



Also Available in 1000V Insulated Version - For more information see page C34

20mm Remote Control Cutter, ACSR/AL/CU - Klauke

Part No. ES20RMCCFM

When cutting overhead lines, there is always the risk of coming into contact with the tool or an electric arc from a live adjacent conductor. With the new Klauke remote controlled cutting tool you remain on the ground at a safe distance.

Features

- Sunrise Adaptor suits universal heads & telescopic sticks
- Can be switched between manual & remote
- Open head is rotatable 330°
- Ergonomic balanced centre of gravity, even when used with a telescopic hot-stick pole
- LED for work area illumination
- Quick motor stop for high user safety
- Automatic retraction when operation is complete
- Saves energy: motor stops after the operation
- Simple one-hand control via remote control
- Powerful Makita battery enables longer on-site operation between charges

Order Information

Part No.	Description
ES20RMCCFM-O	Tool skin and case
ES20RMCCFM-K	Tool, 2 x 1.5Ah batteries, charger and case

Technical Data

Head Type	Open
Battery	Makita 18V 1.5Ah, Li-Ion*
Bluetooth Range (m)	20
Weight (kg)	2.15 including battery

* See page C37 for battery and charger information

Perfect for cutting away lightning arrester leads



Remote



SCAN or CLICK to see the Remote Cutter in action

25mm Cutter, ACSR/Stay Wire/AL/CU - Klauke

Part No. ESG25CFM

- Suitable for cutting Stay Wire, Al/St cables (ACSR), Cu, Al, St as well as armoured cables & solid structural steel
- Lightweight robust design
- Slim cutting head - ideal when space is critical
- All tool data can be viewed using on-tool display and i-press app

Order Information

Part No.	Description
ESG25CFM-O	Tool skin and case
ESG25CFM-K	Tool, 2 x 1.5Ah batteries, charger and case

SCAN or CLICK for correct use video



Features

- All data can be easily read via Bluetooth
- Closed flip top head style, rotatable 350°
- One-button controlling all tool functions
- Balanced Centre of Gravity
- Automatic retraction when operation is complete

- LED Display
- LED for work area illumination
- Manual retract stop (MRS) for efficient operations
- Visible and audible signals
- Battery charge and service display

Technical Data

Cutting Force (kN)	60
Cutting Range (mm)	Max 25 dia. dependent on cable type
Battery	Makita 18V 1.5Ah, Li-Ion*
Charging Time (min)	15
Weight (kg)	2.35 including battery

* See page C37 for battery and charger information

25mm Cutter, ACSR/AL/CU - Klauke

Part No. ESM25CFM

- For cutting open wires AL/CU/ACSR & stay wires
- Slim Parrot Beak cutting head
- Ideal when space is critical
- All tool data can be viewed using on-tool display and i-press app

Order Information

Part No.	Description
ESM25CFM-O	Tool skin and case
ESM25CFM-K	Tool, 2 x 1.5Ah batteries, charger and case

Features

- All data can be easily read via Bluetooth
- One-button controlling all tool functions
- Balanced Centre of Gravity
- Parrot Beak Head, rotatable 350°
- LED Display

- Automatic retraction when operation is complete
- LED for work area illumination
- Visible and audible signals

Technical Data

Cutting Force (kN)	67
Cutting Range (mm)	ACSR Max 25 dia. Stay wires Max 12 dia.
Battery	Makita 18V 1.5Ah, Li-Ion*
Charging Time (min)	15
Weight (kg)	2.9 including battery

* See page C37 for battery and charger information



Suitable for Stay wire & ACSR



Suitable for ACSR, Al & Cu



SCAN or CLICK to see the Cutter in action



Also Available in 1000V Insulated Version - For more information see page C34

Klauke®



Suitable
for Al & Cu
conductors

32mm Cutter, AL/CU - Klauke

Part No. ES32CFM

- Extremely robust design and lightweight
- Slim cutting head - ideal when space is critical
- All tool data can be viewed using on-tool display and i-press app
- Suitable for Al and CU conductors only

Features

- Makita battery system
- All data can be easily read via Bluetooth
- One-button controlling all tool functions
- Effortless working due to balanced centre of gravity
- Open head, rotatable 330°

Order Information

Part No.	Description
ES32CFM-O	Tool skin and case
ES32CFM-K	Tool, 2 x 1.5Ah batteries, charger and case

Technical Data

Cutting Force (kN)	15
Cutting Range (mm)	Max 32 dia. dependent on cable type
Battery	Makita 18V 1.5Ah, Li-Ion*
Charging Time (min)	15
Weight (kg)	2.15 including battery

* See page C37 for battery and charger information

32mm Remote Control Cutter, AL/CU - Klauke

Part No. ES32RMCCFM

When cutting overhead lines, there is always the risk of coming into contact with the tool or an electric arc from a live adjacent conductor. With the new Klauke remote controlled cutting tool you remain on the ground at a safe distance.

Features

- LED Display
- Sunrise Adaptor suits universal & telescopic sticks
- Operation can be switched between manual / remote
- Open head is rotatable 330°
- Ergonomic balanced centre of gravity, even when used with a telescopic hot-stick pole
- LED for work area illumination
- Quick motor stop for high user safety
- Automatic retraction when operation is complete
- Saves energy: motor stops after the operation
- Simple one-hand control via remote control
- Powerful Makita battery enables longer on-site operation between charges

Order Information

Part No.	Description
ES32RMCCFM-O	Tool skin and case
ES32RMCCFM-K	Tool, 2 x 1.5Ah batteries, charger and case

Technical Data

Head Type	Open
Cutting Range (mm)	Max 32 dia.
Battery	Makita 18V 1.5Ah, Li-Ion*
Bluetooth Range (m)	20
Weight (kg)	2.30 including battery

* See page C37 for battery and charger information



Scan or Click below
to see the Remote
Cutter in action



Perfect for cutting
away lightning
arrestor leads



Suitable
for Al & Cu
conductors



Also Available in 1000V Insulated Version
For more information see page C35

45mm Cutter, ACSR/Stay/Armoured/AL/CU - Klauke

Part No. ESGM452CFM

- High cutting force cuts armoured CU and AL cables, ACSR & Stay Wires
- Cuts stranded copper cables
- Extremely robust design and lightweight
- Slim cutting head - ideal when space is critical
- All tool data can be viewed using on-tool display and i-press app

Features

- All data can be easily read via Bluetooth
- Closed head with bolt interlock, flip top style, rotatable 330°
- One-button controlling all tool functions
- Effortless working due to balanced centre of gravity
- Automatic retraction when operation is complete
- Manual Retract Stop (MRS) for efficient operations
- Battery charge and service display
- 2 stage hydraulic system with fast feed and power stroke
- LED for work area illumination
- LED display for showing tool data including visible and audible signals

Order Information

Part No.	Description
ESGM452CFM-O	Tool skin and case
ESGM452CFM-K	Tool, 2 x 1.5Ah batteries, charger and case

Technical Data

Cutting Force (kN)	70
Cutting Range (mm)	Max 45 diameter
Battery	Makita 18V 4.0Ah, Li-Ion*
Charging Time (min)	36
Weight (kg)	4.6 including battery

* See page C37 for battery and charger information

45mm Cutter, ACSR/Stay/AL/CU - Klauke

Part No. ESG45CFM

- High cutting force cuts armoured CU and AL cables, ACSR & Stay Wires
- Also suitable for round material made of Al, Cu and steel
- Extremely robust design and lightweight
- Slim cutting head - ideal when space is critical
- All tool data can be viewed using on-tool display and i-press app

Features

- All data can be easily read via Bluetooth
- Closed head with bolt interlock, flip top style, rotatable 350°
- One-button controlling all tool functions
- Effortless working due to balanced centre of gravity
- Manual Retract Stop (MRS) for efficient operations
- 2 stage hydraulic system with fast feed and power stroke
- Automatic retraction when operation is complete
- LED for work area illumination
- LED display for showing tool data including visible and audible signals
- Battery charge and service display

Order Information

Part No.	Description
ESG45CFM-O	Tool skin and case
ESG45CFM-K	Tool, 2 x 4.0Ah batteries, charger and case

Technical Data

Cutting Force (kN)	70
Cutting Range (mm)	Max 45 diameter
Battery	Makita 18V 4.0Ah, Li-Ion*
Charging Time (min)	36
Weight (kg)	5.9 including battery



Quick release
Flip Top Cutting Head

**The most powerful
cutter in its class.
Armoured/Al/
ACSR/Cu
up to 45mm**



SCAN or CLICK
to see the Cutter
in action



**Suitable for
ACSR**



SCAN or CLICK
to see the Cutter
in action

Klauke®

Suitable for
Al & Cu

Streamline design
makes the ESM50
ideal for cutting
larger cables in
confined spaces



50mm Cutter, AL/CU - Klauke

Part No. ESM50CFM

- For cutting copper and aluminium cables
- Very high cutting capacity thanks to innovative cutting geometry
- All tool data can be viewed using on-tool display and i-press app

Features

- Makita battery system
- All data can be easily read via Bluetooth
- Open head, rotatable 350°
- One-button controlling all tool functions
- Ergonomic balanced centre of gravity
- Automatic retraction when operation is complete
- Manual Retract Stop (MRS) for efficient operations

SCAN or CLICK
to see the
Cutter in action



- LED for work area illumination
- LED display for showing tool data including visible and audible signals
- Battery charge and service display

Order Information

Part No.	Description
ESM50CFM-O	Tool skin and case
ESM50CFM-K	Tool, 2 x 4.0Ah batteries, charger and case

Technical Data

Cutting Force (kN)	38
Cutting Range (mm)	Max 50 diameter
Battery	Makita 18V 4.0Ah, Li-Ion*
Charging Time (min)	36
Weight (kg)	3.0 including battery

* See page C37 for battery and charger information

Suitable
for Al & Cu
& ACSR

55mm Cutter, ACSR/AL/CU - Klauke

Part No. ESG55CFM

Features

- Makita battery system
- All data can be easily read via Bluetooth
- Closed head with bolt interlock, flip top style, rotatable 350°
- One-button controlling all tool functions
- Effortless working due to balanced centre of gravity
- Automatic retraction when operation is complete
- Manual Retract Stop (MRS) for efficient operations

- 2 stage hydraulic system with fast feed and power stroke
- LED for work area illumination
- LED display for showing tool data including visible and audible signals
- Battery charge and service display

Order Information

Part No.	Description
ESG55CFM-O	Tool skin and case
ESG55CFM-K	Tool, 2 x 4.0Ah batteries, charger and case

Technical Data

Cutting Force (kN)	120
Cutting Range (mm)	Max 55 diameter
Battery	Makita 18V 4.0Ah, Li-Ion*
Charging Time (min)	36
Weight (kg)	8.2 including battery

* See page C37 for battery and charger information



120kN Cutting Force

Klauke®

55mm Ratchet Cutter, ACSR/AL/CU - Klauke

Battery Operated Ratchet Cutters, designed for cutting a variety of OH Conductors & UG cables, including CU, AL & ACSR.



Features

- Ergonomically designed
- One handed operation
- LED light to illuminate work area
- Forward & Reverse switch
- Versatile Makita platform

Canvas Carry Bag included



Order Information

Part No. ACSR	Part No. AL/CU	Description
ESST55AP-AL	ESU55AP-AL	Tool skin & canvas bag
ESST55AP-AL-K	ESU55AP-AL-K	Tool, 2 x 3.0Ah* Makita batteries, charger and canvas bag

Technical Data

Part No.	Head Style	Cuts	Jaw opening (mm)	Capacity (mm)			Dimensions (mm) (L x W x H)	Wt (kg) Inc. Battery
				CU	AL	ACSR		
ESST55AP-AL	Ratchet	ACSR	55	-	-	OLIVE*	391 x 110 x 186	3.6
ESU55AP-AL	Ratchet	AL / CU		29	33	-	388 x 110 x 198	3.4

*OLIVE Conductor stranding 54/7/3.50

50 & 65mm Ratchet style Cutters - AL/CU

Battery Operated Ratchet Cutters, designed for cutting a variety of OH & UG Conductors, including CU & AL



Part No. RCB-50Y

- Scissor Style Head
- Ideal for Confined spaces
- Max Cut 630mm²
- 50mm Jaw opening



Part No. RCB-65N

- 65mm Jaw opening
- Max 1000mm²
- Ideal for larger UG cables
- Forward & Reverse mechanism



Order Information

Part No.		Description
RCB-50Y-0	RCB-65N-0	Tool skin & case
RCB-50Y-K	RCB-65N-K	Tool, 2 x 3.0Ah* Makita batteries, charger & case

*See page C37 for battery and charger information

Technical Data

Part No.	Head Style	Cuts	Jaw opening (mm)	Capacity (mm)			Dimensions (mm) (L x W x H)	Wt (kg) Inc. Battery
				CU	AL	ACSR		
RCB-50Y	Scissor Ratchet	AL / CU	50	33	33	-	160 x 110 x 370	4.4
RCB-65N	Ratchet	AL / CU	65	41.5	41.5	-	175 x 110 x 320	3.5

Klauke®


ES85CFM

Cutters, Battery Operated - 85mm & 105mm - Klauke

Features

- Powerful Makita battery system
- All data can be easily read via Bluetooth
- Open style head, rotatable 350°
- One-button controlling all tool functions
- Effortless working due to balanced centre of gravity
- Automatic retraction when operation is complete
- Manual Retract Stop (MRS) for efficient operations
- 2 stage hydraulic system with fast feed and power stroke
- LED for work area illumination
- LED display for showing tool data including visible and audible signals
- Battery charge and service display

85mm Battery Cutters

Part No. ES85CFM

- Large cutting capacity up to 85mm diameter
- Scissor style cutting head

**Cuts
AL/CU**

Order Information

Part No.	Description
ES85CFM-0	Tool skin and case
ES85CFM-K	Tool, 2 x 4.0Ah* batteries, charger and case

Part No. ESG85CFM

- Large cutting capacity up to 85mm diameter
- Suitable for CU, AL & SWA

**Cuts
AL/CU/SWA**

Order Information

Part No.	Description
ESG85CFM-0	Tool skin and case
ESG85CFM-K	Tool, 2 x 4.0Ah* batteries, charger and case

105mm Battery Cutters

Part No. ES105CFM

- Extremely large cutting area up to 105mm diameter
- Suitable for CU, AL & Lightweight SWA

**Cuts AL/CU/
Lightweight SWA**

Order Information

Part No.	Description
ES105CFM-0	Tool skin and case
ES105CFM-K	Tool, 2 x 4.0Ah* batteries, charger and case

Part No. ESG105CFM

- Extremely large cutting area up to 105mm diameter
- Guillotine style cutting head
- Suitable for CU, AL & SWA



SCAN or
CLICK
to see the
ESG105 Cutter
in action

Order Information

Part No.	Description
ESG105CFM-0	Tool skin and case
ESG105CFM-K	Tool, 2 x 4.0Ah* batteries, charger and case



ESG85CFM



ES105CFM



ESG105CFM

Cuts AL/CU/SWA

Technical Data

Part No.	ES85CFM	ESG85CFM	ES105CFM	ESG105CFM
Cutting Force (kN)	30	60	74	120
Cutting Range (mm)	Max 85 OD AL & CU	Max 85 OD AL, CU & SWA	Max 105 OD AL, CU & Lightweight SWA	Max 105 OD AL, CU & SWA
Battery	Makita 18V 4.0Ah, Li-Ion*			
Charging Time (min)	36			
Weight (kg)	6.9 including battery	6.8 including battery	9.6 including battery	10.7 including battery

* See page C37 for battery and charger information

Cutters, Hand Operated, Hydraulic

20, 25 & 40mm Hand Operated Cutters



- Two stage double acting hydraulics
- Ram extends on both open & closed operation
- Manual pressure release at any stage
- Flip top latch head
- Replaceable blades

Part No.	HC-20A	REL-58MC	HC-40A
Brand/Manufacturer	TEN	Reliable	TEN
Head Rotation (°)	180	180	180
Cutting Force (T)	6.0	5.3	8.0
Safety Valve	Yes	Yes	Yes
Length (mm)	390	400	560
Maximum Cutting Capacity OD (mm)			
Cu / Al	20	25	40
ACSR	20	25	28
Wire Rope	16	25	22
Standard Guy Wire	16	22	15
ReBar, Ground & Anchor Rods	13	16	13
Soft Steel Bolts	16	16	13
Specific Features	Double Stage Hydraulic design	Auto-Retract, No Disassembly to Replace Moving Blade	Double Stage Hydraulic design
Storage Supplied	Carry Bag	Carry Bag	Carry Bag
Weight (kg)	2.8	1.8	6.0

Klauke®

Cutters, Remote Head, Hydraulic

40 to 105mm Cutters, Remote Head



Part No.	SDG105C	SDG852C	SDG45C	PK60UNVC	SDK85C
Type	AL/CU/SWA	AL/CU/SWA	ACSR/AL/CU	ACSR/AL/CU	AL/CU/SWA
Cutting Range (mm)	max. 105 OD	max. 85 OD	max. 45 OD	max. 40 OD	max. 85 OD
Cutting Force (T)	12	6	6	6	3
Operating Pressure (PSI)	10,000	10,000	10,000	10,000	10,000
Length (mm)	432	445	340	350	450
Weight (kg)	7.7	4.3	3.8	2.4	5.2

Klauke Next Generation Universal Tools - One tool for all your needs

Crimping, cutting or punching: Replaceable adapter and dies quickly adapt the tool to individual tasks. Lightweight and powerful: Crimping up to 400 mm², cutting up to 40 mm diameter or punching up to 92 x 92 mm, no problem at all for the Klauke Multi.

Crimping

Can be used with Series 5, 18 and 22 Series dies (6T)

Wide range crimping with Series 13 dies (12T)

Cross sections up to 400mm²

Simple adapter replacement

Cutting

A wide range of materials can be cut including aluminium, copper, threaded rods, profile rails, railway catenary wires

Cutting dies available for each application

Cutting range up to 40mm

Punching

Versatile punching with hole punch adapters available

Punch holes up to 64mm diameter (EK60 & EKM60)

NEXT GENERATION

All your
hydraulic
battery tools in
one box



SCAN or CLICK
to see Universal
Tool in action



12 Tonne Universal Tool - Pistol Grip - Klauke

Part No. EK120UNVCFM

- One head for crimping, cutting and punching - one tool for all
- Ideal for field operations where all common jobs can be carried out with just one tool
- Very large crimping range

Features

- Makita battery system
- All data can be easily read via Bluetooth
- Universal head with flip top style, rotatable
- One-button controlling all tool functions
- Automatic retraction after operation completed
- 2 stage hydraulic system with fast feed and power stroke
- Effortless working due to balanced centre of gravity
- LED for work area illumination
- LED display for showing tool data
- Battery charge and service display



Order Information

Part No.	Description
EK120UNVCFM-0	Tool skin, 12 Tonne Die Adapter and case
EK120UNVCFM-K	Tool, 12 Tonne Die Adapter, 2 x 4.0A batteries, charger and case

Technical Data

Crimping Force (kN)	108
Crimping Range (mm)	10-400
Number of Crimps	approx. 110 at 150mm Cu DiN
Cutting Range (mm)	max. 40 diameter
Punching Capacity (mm)	Up to 144 dia. round**
Battery	Makita 18V 4.0Ah, Li-Ion*
Charging Time (min)	36
Weight (kg)	7.35 including battery

*See page C37 for battery and charger information

**10-400mm² Crimping capacity
40mm dia. Cutting Range
144mm dia. round punching**

Universal Tool Adaptors

Accessories/Tool	EK120UNVCFM	EK60UNVCFM	EKM60UNVCFM
12 Tonne Die Adaptor (included)	UA12T	Not Applicable	Not Applicable
6 Tonne Die Adaptor (included)	Not Applicable	UA22	UA22
Cutter 40mm ACSR	UCASR	UCASR	UCASR
Cutter 40mm Al/Cu	UC40	UC40	UC40
Punch Adaptor	UA12P (Up to 144mm)	UA12P (Up to 64mm)	UA12P (Up to 64mm)
Cutter - Rail Catenary	Upon Request	Upon Request	Upon Request
Cutter - Threaded Rod	Upon Request	Upon Request	Upon Request

**Square Punch & Dies available upon request

12T Die Adaptor
Part No. UA12T



Cutting Die
Part No. UCACSR



Cutting Die
Part No. UC40



Punch Adaptor
Part No. UA12P

**Punch Dies and Draw studs
available - See Page C50**

Klauke®



**6-300mm² Crimping Capacity
40mm OD. Cutting Range
64mm dia. Round punching**

6 Tonne Universal Tool - Pistol Grip - Klauke

Part No. EK60UNVCFM

- One head for crimping, cutting and punching
- Ideal for field operations where all common jobs can be carried out with just one tool
- All tool data can be viewed using on-tool display and i-press app

Features

- Makita battery system
- All data can be easily read via Bluetooth
- Universal head with flip top style, rotatable 350°
- One-button controlling all tool functions
- Safety: Automatic retraction after operation completed
- 2 stage hydraulic system with fast feed and power stroke

Order Information

Part No.	Description
EK60UNVCFM-O	Tool skin and case
EK60UNVCFM-K	Tool, 2 x 4.0Ah batteries, charger, and case

- Balanced centre of gravity
- LED for work area illumination
- Battery charge and service display
- LED Display

Technical Data

Crimping Force (T)	6
Crimping Range (mm ²)	6-300
Cutting Range (mm)	max. 40 diameter (See page C31 for adapter)
Punching Capacity (mm)	Up to 64 dia. round (See page C31 for adapter)
Battery	Makita 18V 4.0Ah, Li-Ion*
Charging Time (min)	36
Weight (kg)	4.8 including battery

*See Page C31 for Accessories

6 Tonne Universal Tool - In-Line - Klauke

Part No. EKM60UNVCFM

- One head for crimping, cutting and punching 330°
- Ideal in the assembly field where all common jobs can be carried out using one tool
- All tool data in view thanks to display and i-press

Features

- All data can be easily read via Bluetooth
- Quality assurance via visual and audible signals
- One-button controlling all tool functions
- Universal head flip top style, rotatable
- Balanced centre of gravity

Order Information

Part No.	Description
EKM60UNVCFM-O	Tool skin and case
EKM60UNVCFM-K	Tool, 2 x 1.5Ah batteries, charger, and case

- LED for work area illumination
- 2-stage hydraulic system with fast feed and power stroke
- Automatic retraction when operation is complete
- LED Display

Technical Data

Crimping Force (T)	6
Crimping Range (mm ²)	6-300
Cutting Range (mm)	max. 40 dia. (See page C31 for adapter)
Punching capacity (mm)	up to 64 dia. round (See page C31 for adapter)
Battery	Makita 18V 1.5Ah, Li-ion*
Charging Time (min)	15
Weight (kg)	3.0 including battery

*See page C37 for battery and charger information



**6-300mm² Crimping
Capacity 40mm OD
Cutting Range
64mm dia. round
punching**

Insulated Battery Tools

Your Safety is our priority

Klauke's Orange Line series of battery powered hydraulic cutting and crimping tools are the world's first of their kind, offering protection from electric shocks up to 1000 V. The TRI-INSULATION BARRIER, developed in-house, prevents voltage discharging between tool head and tool body. Every single tool is tested for compliance with the electrical requirements of IEC 60900 in their production process. This guarantees voltage protection up to 1000V.

TRI-INSULATION BARRIER



- 1. CREEPAGE DISTANCE**
CLEVER DESIGN ENSURES
MINIMUM 12.5MM DISTANCE
BETWEEN NON INSULATED PARTS
- 2. PA6 INSULATION**
PLASTIC HOUSING MATERIAL
WITH EXCELLENT INSULATING
PROPERTIES
- 3. DIELECTRIC OIL**
HYDRAULIC OIL WITH HIGH
DIELECTRIC INSULATING PROPERTY

- VDE tested and certified up to 1000V in accordance to the electrical requirements of IEC 60900.
- Insulation from the head provides protection for the operator.
- Bright Orange rubberised body provides non slip protection and differentiates from standard tools.

Working on or near live low-voltage parts up to 1000V is often part of every day work in certain sectors. The use of insulated manual hand tools in tight workspaces and exerting the force required to operate insulated manual hand tools poses a safety risk to the operator.

Klauke Orange tools offers battery-powered cutting and crimping that can significantly reduce operator risk by improving precision and safety in these hazardous work conditions.

**Klauke Insulated Tools
provide a safer option**



Klauke®

Endless Rotating Head

 Cuts
Cu, Al
& ACSR


1000V Insulated Battery Powered Tools - Klauke

20mm Cutter, ACSR/AL/CU - Klauke

Part No. ES20ISM

- Orange body for easy differentiation
- Insulated and VDE certified to 1000V for increased safety
- For cutting Al/St conductors (ACSR), Al/Cu cables and laminated copper bus bars
- All tool data in view thanks to the LCD display and Klauke i-press software

Features

- All data can be easily read via Bluetooth
- Visual and audible signals
- One-button controlling all tool functions
- Balanced centre of gravity
- Endless Rotatable head
- LED for illuminating work area
- Automatic retraction when operation is complete
- LED Display

Order Information

Part No.	Description
ES20ISM-O	Tool skin and case
ES20ISM-K	Tool, 2 x batteries, charger and case

**MEETS
IEC 60900**

Technical Data

Cutting Force (kN)	23
Cutting Range (mm)	Up to 20 dia (dependent on cable/wire type)
Battery	Makita 18V 1.5Ah, Li-ion*
Charging Time (min)	15
Weight (kg)	2.1 including battery

* See page C37 for battery and charger information

25mm Cutter, ACSR/AL/CU - Klauke

Part No. ESM25ISM

- Orange body for easy differentiation
- Insulated and VDE certified to 1000V for increased safety
- For cutting Al/St wires (ACSR), (Cu, Al, St) cables as well as armoured cables, and stay wires
- All tool data in view thanks to the LCD display and Klauke i-press software

Features

- All data can be easily read via Bluetooth
- Visual and audible signals
- One-button controlling all tool functions
- Balanced centre of gravity
- Endless Rotatable head
- LED for illuminating work area
- Automatic retraction when operation is complete
- LED Display

Order Information

Part No.	Description
ESM25ISM-O	Tool skin and case
ESM25ISM-K	Tool, 2 x batteries, charger and case

**MEETS
IEC 60900**

Technical Data

Cutting Force (kN)	67
Cutting Range (mm)	Open wire (ACSR) to 25 dia., stay wires to 16 dia., high-tensile stay wires to 12 dia.
Battery	Makita 18V, 1.5Ah, Li-ion*
Charging Time (min)	15
Weight (kg)	2.9 including battery

* See page C37 for battery and charger information

Endless Rotating Head

 Cuts
Cu, Al,
ACSR &
Stays


32mm Cutter, AL/CU - Klauke

Part No. ES32ISM

- Orange body for easy differentiation
- Insulated and VDE certified to 1000V for increased safety
- Slim cutting head - ideal when space is critical
- All tool data in view thanks to the LCD display and Klauke i-press software

Features

- All data can be easily read via Bluetooth
- Visual and audible signals
- One-button controlling all tool functions
- Balanced centre of gravity
- Endless Rotatable head
- LED for illuminating work area
- Automatic retraction when operation is complete
- LED Display

Order Information

Part No.	Description
ES32ISM-0	Tool skin and case
ES20ISM-K	Tool, 2 x batteries, charger and case

**MEETS
IEC 60900**

Technical Data

Cutting Force (kN)	15
Cutting Range (mm)	max. 32 dia
Battery	Makita 18V, 1.5Ah, Li-ion*
Charging Time (min)	15
Weight (kg)	2.1 including battery

* See page C37 for battery and charger information

50mm Cutter, AL/CU - Klauke

Part No. ESM50ISM

- Orange body for easy differentiation
- Insulated and VDE certified to 1000V for increased safety
- High cutting force for cutting copper and aluminium cables
- Saves time due to innovative opening mechanism design
- All tool data in view thanks to display and i-press

Features

- All data can be easily read via Bluetooth
- Visual and audible signals
- One-button controlling all tool functions
- Balanced centre of gravity
- Endless Rotatable head
- LED for illuminating work area
- Automatic retraction when operation is complete
- LED Display

Order Information

Part No.	Description
ESM50ISM-0	Tool skin and case
ESM50ISM-K	Tool, 2 x batteries, charger and case

**MEETS
IEC 60900**

Technical Data

Cutting Force (kN)	38
Cutting Range (mm)	max. 50 dia
Battery	Makita 18V, 1.5Ah, Li-ion*
Charging Time (min)	15
Weight (kg)	3.1 including battery

* See page C37 for battery and charger information

Endless Rotating Head

**Cuts
Cu & Al**

Endless Rotating Head

**Cuts
Cu & Al**

Klauke®

5 Tonne Crimper & Cutter - Klauke

Part No. EK425ISM

- Orange body for easy differentiation
- Insulated and VDE certified to 1000 V for increased safety
- All tool data in view thanks to the LCD display and Klauke i-press software

Features

- All data can be easily read via Bluetooth
- Visual and audible signals in case of error
- One-button controlling all tool functions
- Balanced centre of gravity
- Endless Rotatable head
- LED for illuminating work area
- Automatic retraction when operation is complete
- LED Display

Order Information

Part No.	Description
EK425ISM-O	Tool skin and case
EK425ISM-K	Tool, 2 x batteries, charger and case

**MEETS
IEC 60900**

Endless Rotating Head

**Crimps
up to
240mm²
Cuts up to
20mm**



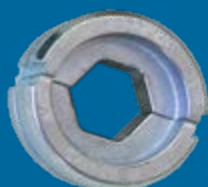
Technical Data

Crimping Force (kN)	53
Application	5 Tonne Crimping
Crimping Capacity (mm ²)	Cu/Al 240, ACSR 185
Battery	Makita 18V, 1.5Ah, Li-ion*
Charging Time (min)	15
Stroke/Opening Width (mm)	40
No of crimps per charge	140 @ 70mm ²
Dimensions (mm)	430(H) x 110(W) x 80(D)
Weight (kg)	2.6 including battery

*See page C37 for battery and charger information

53kN force in a lightweight tool of only 2.6kg

**6T Style Dies
Available see page C9**



Available cutting heads

	CJACSR	CJCU
Capacity (mm)	17.5 OD	20 OD
Length (mm)	145	140
Weight (kg)	1	1
Cuts	ACSR/Steel	CU/AL



CJACSR

CJCU



Makita 230VAC Rapid Charger
Part No. DC18RC



Batteries, Chargers and Accessories

Makita 18V Charger

Part No. DC18RC

Features

- Integrated L.E.D.
- Battery charge level indicator allows user to monitor battery charge.
- Impact-resistant outer case and shock-absorbing inner-liner are engineered to protect the battery.
- Sixteen contact terminals maintain a constant connection with the tool to help prevent power loss or fluctuation, even during high-vibration applications.
- Battery resists self-discharge and remains ready for use even after long periods of storage.
- Star protection computer controls

- includes overload protection, over-discharge protection and over heat protection.

- If the battery reaches a certain level of heat it will cut power to the tool, protecting the tool and battery from overheating.
- Forced air cooling fan - cools the battery to minimise charging time.
- Digital power display identifies the condition of the battery and charging condition.
- Warranty: 2 Years Warranty Covered By Makita Australia.

Klauke 10.8V Charger

Part No. LGML1AU

Charger for Klauke Battery RAML1

Features






- 230VAC Charger
- Charges Klauke 10.8V batteries

EK50MLAU
Mini Crimper



Makita & Klauke Batteries

Older Style KLAUKE Batteries available on request

Battery	Makita BL1815N-L	Makita BL1830B	Makita BL1840B	Makita BL1850B	Klauke RAML
					
Voltage (V)	18	18	18	18	10.8
Amp (Ah)	1.5	3.0	4.0	5.0	1.5
Charge Time (min)	15	22	36	45	40
Weight (g)	300	605	610	615	300

Adaptor, Makita Platform to Milwaukee Battery

Part No. MMA18



Makita Battery Platform

Adaptor

Milwaukee Battery



Tool Strap

Part No. TENM703

- Quality Tool Strap Ideal for Battery Tools
- 2m Web Strap complete with Snap Hook



Pumps, HP Hydraulic 700bar (10,000psi)

Electric - Single Acting

Part No. PH240V-SA-A

- High pressure electric hydraulic pump gives the operator portability and complete control with simple push button operation.
- 700Bar/10,000PSI
- Corded Pendant Remote
- Single phase (230V)



Technical Data

Engine	Single phase electric - 230V 50Hz
Motor Power (kW)	0.75
Max Pressure (PSI)	700 bar (10000)
Flow Rate (lt/min)	Low pressure: 6
	High pressure: 0.7
Oil tank Capacity (lt)	5
Weight (kg)	Approx. 28 Inc. Oil
Dimensions (mm)	315 (L) x 255 (W) x 460 (H)

TESMEC



Petrol - Double Acting - TESMEC

Part No. CPP001050

- A high pressure petrol motor driven hydraulic pump suited for use where compact, efficient, portable machinery is required.

- High pressure - 700Bar/10,000PSI
- Compact size for portable use.
- Tesmec build quality

Technical Data

Engine	4 stroke petrol
Motor Power (HP)	5.5
Max Speed (rpm)	3600
Max Pressure (PSI)	700 bar (10000)
Low Pressure (lt/min)	(0-60 bar) 5
Max Delivery (min)	1.8
Tank Capacity (lt)	10
Weight (kg)	54
Dimensions (mm)	530 (W) x 340 (L) x 370 (H)



Electric - Double Acting - TESMEC

Part No. CPP004010

- A high pressure electric motor driven hydraulic pump suited for use where compact, efficient, portable machinery is required.

- High pressure - 700Bar/10,000PSI
- Compact size for portable use.
- Tesmec build quality

Technical Data

Engine	Single phase electric - 230V 50Hz
Motor Power (kw)	2.2
Max Speed (rpm)	2880
Max Pressure (PSI)	700 bar (10000)
Low Pressure (lt/min)	(0-60 bar) 5
Max Delivery (min)	1.8
Tank Capacity (lt)	10
Weight (kg)	50
Dimensions (mm)	530 (W) x 340 (L) x 370 (H)

See page C47 for
Hydraulic Hoses

Battery Pump - Single Acting - Klauke

**One Pump-
Multiple Heads**

Compact and lightweight Single Acting Hydraulic Pump for operating remote cutting and crimping heads (As shown below)



**5.5kg
incl. Battery & Hose**

Part No. RHP700LK

- Compact and lightweight design
- Suitable for operating high pressure single acting 700 bar crimping and cutting tools
- Fibreglass reinforced polyamide shock proof housing
- Pendant Remote control (Standard)
- All high pressure hoses are supplied with coupling plug and sleeves, filled with hydraulic oil

Technical Data

Battery Voltage (V)	18
Battery Capacity	2 x 4.0Ah. Li-ion*
Charging Time (min)	22
Weight (kg)	5.5 inc battery & hose
Operating Pressure (PSI)	max. 700bar (10000)
Max Oil Volume (ml)	approx. 760ml
Dimensions (mm)	265 (L) x 130 (W) x 250 (H)

Order Information

Part No.	RHP700LK-K	RHP700RMCLK-K
Kit Includes	Pump, Corded Pendant, 2m Conductive Hose, 2 x batteries, charger & a bag	Pump, Remote & Corded Pendant, 2m Conductive Hose, 2 x batteries, charger & a bag



Pump shown above with optional cutting head and a hydraulic hose



Pump shown above with optional crimping head and a hydraulic hose



Makita Charger
Part No. DC18RC



Makita 4Ah Batteries
Part No. BL1840B



2m Hose
c/w Male Couplers



Padded
Carry Strap

Available Heads - See page information below for further detail on remote heads

Cutting



7.7kg

105mm Armoured Cutting Head
Part No. SDG105C



3.8kg

45mm Armoured Cutting Head
Part No. SDG45C



4.3kg

85mm Armoured Cutting Head
Part No. SDG852C



5.2kg

85mm Cutting Head ACSR/Steel
Part No. SDK85C

Multi Tools



2.4kg

Head Page C14
Accessories Page C31

**Multi Head
Crimping/Cutting/Punching**
Part No. PK60UNVC

Crimping



4.5kg

12T Crimping Head
Part No. TP-420H



5.3kg

25T Crimping Head
Part No. HP25T-SA



30.5kg

60T Crimping Head
Part No. HP60TC-SA

Page
C16

45T Crimping Head
Part No. HP45T-SA-A



11.0kg

Klauke®

Spiking/Cutting, Cable Systems - Klauke

1000V Insulated Pump & Cutting Head - Remote Control

Part No. ASSGG-Series Pump



SCAN or
CLICK
to View
Operation
Video



Technical data

Battery Voltage (V)	18
Battery	2 x 4.0Ah, Li-ion*
Charging Time (min)	36
Weight (kg)	6.4 inc battery
Operating Pressure (PSI)	700bar (1000)
Usable Oil (ml)	800
Dimensions (mm)	330 (L) x 160 (W) x (H) 280

Order Information

Part No.	Description/Components
ASSGG105LC	Safety Pump (ASSGL), Remote Kit, 2 x Batteries, 10m Non-conductive Hose, 105mm Cutting Head ** (SDG105C), & Earth Spike with copper lead
ASSGG852LC	Safety Pump (ASSGL), Remote Kit, 2 x Batteries, 10m Non-conductive Hose, 85mm Cutting Head ** (SDG8525C), & Earth Spike with copper lead

* See page C37 for battery and charger information

** See page C29 for specifications



Safely perform your cutting/spiking operations on unproven cables from

A SAFE
DISTANCE



ESG105RMCCFM

Pistol Style Cutters 65 & 105mm - Remote Controlled

Part No. ESG105RMCCFM - ESG65RMCCFM

- Large (105mm) & Medium (65mm) diameter remote controlled cable cutter
- Same performance as the standard (105) counterpart but adds a safe work environment
- Ideal for hard to access trenches and manholes by creating adequate distance between possible live conductors and the operator

Features

- Unique End Position Control - Emits a sound on the remote to indicate a successful cut. Safer than relying on the Maximum Hydraulic pressure indicator or gauge
- Remote control will only operate when the tool trigger is locked by the Spring Ring

Order Information

Part No.	Description
ESG105RMCCFM-K ESG65RMCCFM-K	Tool, Remote Control, 2 x Batteries, Charger and case

- Double Click on the remote to start the cut (safety feature against unintended operation)
- Single Click on the remote for retraction



Unique
Cutting
Sensor

Technical Data

Part No.	ESG105RMCCFM	ESG65RMCCFM
Cutting Force (T)	120	60
Cable Type	AL/CU/SWA	AL/CU/SWA
Cutting Range (mm)	Max 105 dia. dependent on cable type	Max 65 dia. dependent on cable type
Battery	Makita 18V 4.0Ah, Li-Ion	Makita 18V 4.0Ah, Li-Ion
Charging Time (min)	36	36
Weight (kg)	10.5 including battery	6.0 including battery

Wrench, Hydraulic Impact - Low Pressure



Part No. Various

- Lightweight aluminium alloy
- Feather trigger allows control of speed
- Larger clearance trigger guard for high voltage gloves
- Ergonomic balanced design with finger moulds in trigger
- Easily changeable forward/reverse push shaft
- EZ selector valve allows change between open and closed centre without tools
- Fixed Tools also available
- Supplied with trigger guard and flush face couplers
- Heat insulated handle
- Lifetime warranty on motor only
- Operating pressure 1,000 - 2,000PSI

Part No.	Chuck Type	Pressure (PSI)	Flow (l/min)	Torque (kN-m)	RPM	Weight (kg)
REL-425CG-TEN	7/16"	1,000 - 2,000	19-30	0.50	3,600	3.9 with coupler
REL-425CG-1.2	1/2"					

See page C47 for Hydraulic Hoses

Adaptor - 7/16" Hex to 1/2" Square Drive



Part No. TEN-716-12

- 7/16" hex shaft adapter for 1/2" square drive sockets
- Convert your 7/16" utility impact wrench to a 1/2" drive for your impact sockets
- Designed for high torque Impact wrenches
- Superior wear resistance and durability for utility grade use
- Made from high strength, shock proof steel

"J" Hook Driver - Slot Socket PLUS

Part No. SS-2

Features

- High Visibility ID Band
- Improved Fit on Large J Hooks (Off-Set & Centre)
- Cross-Arm Hardware
- Earthing Clamps
- Hot Line Clamps
- Impact Rated

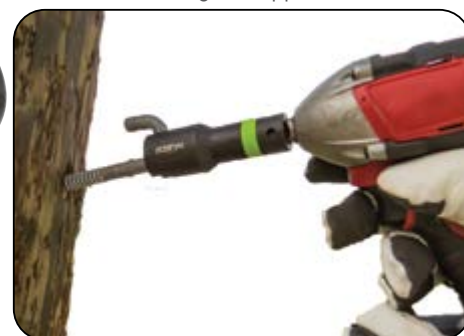


Suits
Off-Set &
Centred
J-Hooks



1/2"
Drive

Multi-Use Eye Bolt Type Clamp
and Wing Nut Applications:



Sockets Sets ½" Drive

Deep Impact Socket Set - 26 & 29 Piece Kits

Part No. 658272601 - 26 Piece ½" Drive, 12-Point Deep Impact Socket Set
Includes: 10 to 36mm (Excluding 31 mm) stored in a Blow Mould Case.

Part No. 84935N - 29 Piece ½" Drive, 6-Point Deep Impact Socket Set
Includes: 8 to 36mm stored in a Blow Mould Case.

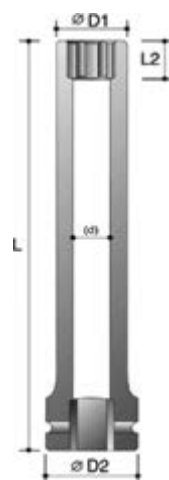
Part No.	Description	Type
658272601	26 piece Socket Set - Deep Impact	12 Point
84935N	29 piece Socket Set - Deep Impact	6 Point

Extra Deep Tube Socket Set - 7 Piece Kit

Part No. 605290701

7 Piece ½" Drive, 6-Point "TUBE" Deep Impact Socket Set
Includes: 19, 21, 24, 27, 30, 32 and 36mm @ 250mm Long Moulded Case

Part No.	Size (mm)	D2 (mm)	D1 (mm)	L2 (mm)	L (mm)	Hole Clearance (mm)
60529019	19	28	28	13	250	14
60529021	21	28	31	13	250	16
60529024	24	28	35	15	250	18
60529027	27	32	38.5	17	250	22
60529030	30	32	42	17	250	22
60529032	32	34	44	19	250	24
60529036	36	36	49	19	250	26



METRINCH Socket Set - 15 Piece Kit

Part No. MET-2450

Get More Use Out of Fewer Tools

Metrinch means fewer tools and easier selection as each tool can be used for both metric and inch, plus damaged nuts and bolts. This eliminates switching back and forth from imperial to metric.

- Unique Patented Design
- More Torque, Less Wear
- Non Slip Hold
- Quality



Included sizes in Socket Set*

Fit	½" Drive							
Metric (mm)	11	12	13	14	15	16	17	18
SAE/AF (Inch)	7/16	15/32	1/2	9/16	19/32	5/8	11/16	23/32
Length (mm)	80							
Fit	½" Drive							
Metric (mm)	19	20	21	22	23	24	25	
SAE/AF (Inch)	3/4	25/32	13/16	7/8	29/32	15/16	1	
Length (mm)	80				86			



METRINCH



The Metrinch 6 wall drive system means that one tool set is all you need to service your equipment, whether it's made in Germany, the USA or Australia.

Unique 6 Wall Drive System
This 15 Piece socket set equals a 42 piece conventional set

Individual sizes available

Fit	½" Drive	
Metric (mm)	30	32
SAE/AF (Inch)	1 3/16	1 1/4
Length (mm)	86	

*All sizes available individually



Augers, Impact - Woodpecker

Woodpecker Impact Auger Bits are engineered to deliver fast, clean cut holes in Australian hardwood power poles.

The new, improved high grade steel alloy is designed for a longer bit life, staying sharper longer. Featuring a single, heat treated and tempered cutting edge for fast, effortless boring in hardwood. The clean cut of these bits allows easier removal from the pole and helps bolts to slide through with less resistance.

The design is optimised to cut quickly through hardwood with an aggressive lead screw pulling the bit through the material more easily while the wider flute design quickly ejects the chips to clear the hole. This helps to reduce heat, leading to overall faster drilling speeds and longer tool life.

Features

- Designed to drill cleaner and faster holes in Australian hardwood poles
- 7/16" Quick change hex shank – suitable for electric drills or impact wrenches
- Optimum shaped wide cutting flute ensures a faster chip ejection, less friction and a longer lasting cutting edge
- Solid core for added strength, auger stability and extended tool life
- Supplied in a protective storage case

Pre 1966
Greybox
Hardwood



**Designed to drill the
Toughest Australian
Hardwoods**



**PROTECTIVE
STORAGE CASE**



Part No.	Length (mm)	Dia (mm)
WP-225-08	225	8
WP-225-10	225	10
WP-225-11	225	11
WP-225-12	225	12
WP-225-14	225	14
WP-225-16	225	16
WP-225-18	225	18
WP-455-14	455	14
WP-455-16	455	16
WP-455-18	455	18
WP-455-20	455	20
WP-455-22	455	22
WP-455-24	455	24
WP-455-26	455	26
WP-455-28	455	28
WP-455-40	455	40
WP-610-16	610	16
WP-610-18	610	18
WP-610-22	610	22
WP-610-24	610	24
WP-610-26	610	26

Chuck, Quick Change 7/16" Female to 1/2" Female

Part No. 2403

- Super Heavy Duty 7/16" (1/2" Square Drive) Quick-Change Chuck.
- Three ball bearing system to firmly secure your auger bits and adapters.
- Designed to be used with high torque 1/2" square drive impact wrenches.



**THE ONLY 62" (1.6m)
LONG REACH CHAIN-
SAW AVAILABLE**

Adjustable Chain Oiler

Insulated section length

Foam Filled

Safety trigger

EZ OC to CC
Selector

Trigger guard

Chain Saw, Long Reach - Foam Filled

Part No. REL-LR-Series

Reliable's REL-LR-62-TEN-A long reach hydraulic chainsaw are intended for safely cutting and trimming trees from the ground or an aerial bucket. The powerful hydraulic drive motor can easily make cuts up to 330mm in diameter. With an overall length of 1600mm (Also available 1900 & 2250mm), the operator may easily reach areas not possible with a standard chain saw.

Features include a trigger guard and safety trigger to prevent accidental movement of the chain, a covered sprocket guard, and a rubber collar hand stop. A quick set spool can be turned 180 degree for closed center/open center operations.

Features

- Powerful hydraulic drive motor
- EZ selector valve allows change between open and closed centre systems without tools
- Foam filled fibreglass shaft to prevent ingress of moisture and provide additional electrical safety protection
- Trigger guard, sprocket guard, rubber hand guard and scabbard
- Flush face couplers fitted

Available in 3 Lengths

Technical Data

Part No.	REL-LR-62-TEN-A	REL-LR-75-TEN-A	REL-LR-88-TEN-A
OAL (mm)	1600	1900	2250
Insulated Section Length (mm)	845	1175	1515
Cut Capacity (mm)	330		
System	Open or Closed		
Flow Range (lpm)	19-30		
Operating Pressure (PSI)	(1,000-2,000) 68.9-137.8 Bar		
Pressure Port Thread	9/16" -18 SAE O-Ring		
Return Port Thread	3/4" -16 SAE O-Ring		
Chain Pitch (mm)	8.25/25.4		
Chain Gauge (mm)	1.47/25.4		
Plastic Scabbard	SCAB-PS		
Weight (kg)	3.6	4.3	5



**Foam filled for added electrical
safety protection**



**Boom Mount Long Reach
Saw Scabbard also available
Part No. REL-LR-SS**



**Power in your hands,
pressure off your back**

Tamper, Pole Hydraulic - Reliable

Part No. REL-TMP-Series

Makes quick work of setting poles, asphalt patch and general construction backfill compacting. Only 3 moving parts for low maintenance.

Reversible On/Off valve for Open and Closed-Center systems (hose-end models). Standard with kidney-shaped foot. Rotate trigger selector for Open and Closed-Center systems (valve on tube models). Used for setting poles and general backfill compacting

- Standard kidney shaped foot included on all models
- Only three moving parts reduces servicing time
- Change between open and closed centre systems
- Flush face couplers fitted
- Hose End Valve & Valve on Tube options available

**Hoses available
with Burst
protection**

Valve on
Tube



Valve
on Hose

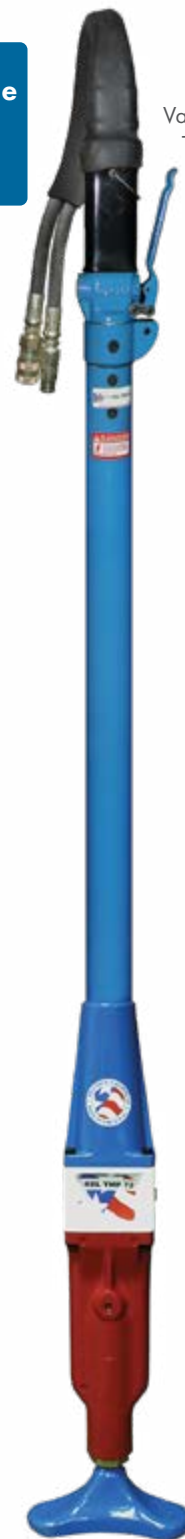
TAMP-SAFE
TS2001R



The Tamp-Safe handle was designed by a professional linesman for the safety of utility workers.

Tamp-Safe handles are built with safety in mind. It puts the operator's hand in a safe position away from the hydraulic hoses.

Our innovative handle is designed to attach to most hydraulic tampers, including Reliable, Greenlee/Fairmont, and Stanley tampers.



Kidney Shaped
Tamping Foot

Technical Data

Part No.	Type	Length (m)	Width (mm)	Flow Range (lt/min)	Pressure Port Thread	Return Port Thread	Foot Size (mm)	Blows (lt/min)	Approx Weight (kg)	Tamp-Safe Part No.
REL-TMP-60VT-TEN	Valve on Tube	1.5	100	15-23	1/16" - 18 SAE O-Ring	3/4" - 16 SAE O-Ring	60 x 200	1160	9.5	TS-2001R
REL-TMP-72VH-TEN	Valve on Hose	1.8							11	
REL-TMP-72VT-TEN	Valve on Tube	1.8							11	
REL-TMP-85VH-TEN	Valve on Hose	2.1							12.1	



Pole Pullers, Hydraulic

56 Tonne Hydraulic Pole Puller

Part No. PP-60-XHD

- Dual Cylinder Pole Puller
- 600mm hydraulic cylinder stroke
- High capacity, hydraulic powered
- Pulling utility poles up to 700mm diameter
- Force of 56 Tonne
- Grips the pole with cam-action heads
- Cam action head has bevelled teeth to provide a better grip
- Use with open-centre or closed-centre hydraulic systems
- Fitted with 7.5m hydraulic hose
- Features built-in fork pockets, 2 lifting points on the head and high strength alloy chains
- Increased stability due to larger footprint
- Increased gripping capability ensures chain does not slip up pole
- Utilises existing low pressure tool circuit on lifter borer-crane
- Hydraulics: Required flow rate 5-15 gpm @ 2,250PSI max.

**56 Tonne
Hydraulic
Pulling Power**



SCAN or CLICK
to View
Operation Video

**Reduce Risks
Increased Safety**



Technical Data

Performance	Pull 56 Tonne at 155 bar (2250)
Maximum Pole Size (mm)	710 Diameter 2230 Circumference
Cylinder	Stroke 600, Bore 150, Rod 125
Head Chains	2 x 22mm Grade 100
Footprint (mm)	Exterior 1168 x 1168 Interior 711 x 711
Height (mm)	Retracted 1500 Extended 2100
Weight (kg)	680
Lifting Points	2 lifting eyes on the head Fork Pockets 83 x 184 x 1168

22 Tonne Hydraulic Pole Puller

Part No. REL-PL-P

The REL-PL-P will make Pole Pulling with a Lifter Borer a thing of the PAST. Reduce damage and potential for injury related to pole pulling. Simple installation and operation combined with RELIABLE performance makes this Pole Puller a "Must Have Accessory" for all of your pole pulling operations.

Kit Includes:

- Hydraulic Cylinder with Flush Face Coupler Set
- Swivel Chain Hook Assembly
- Chain (12.7mm x 1830mm Alloy)
- Base Plate & Back Plate

Technical Data

Operating Pressure (PSI)	2800 (193bar)
Recommended Flow (lpm)	15-30
Lift at Maximum Pressure (kg)	22,734kg
Part	Weight (kg)
Cylinder	25.85
Base Plate	11.36
Back Plate	3.2
Swivel Chain Hook Assembly	16.32
Chain	6.8
Base Pad (Optional)	11.36

R12-TD Test die (included)



Coupler TC-371



Nipple TC-372



Compression Test Gauge - 12 Tonne

Part No. REL-CG-12TN

For testing compression output of 12 Tonne crimpers. Portable hydraulic fault identification tool complete with R12-TD "U" style test dies.

Max Gauge Reading	15,000PSI 1034 Bar
Weight (kg)	2

Couplers, HP Hydraulic

TC Series couplings are used in high pressure applications with hydraulic and mechanical shock. Steel coupler sleeves and nipple bodies are hardened for resistance to damage. Fluorocarbon seals along with PTFE back up rings provide reliable sealing in high pressures. Available in 3/8 inch size only, with sleeve lock to guard against accidental disconnection.

Technical Data

- Body Size: 3/8
- Rated Pressure (psi): 10,000
- Rated Flow (gpm): 6
- Temp Range (C): -26° - 204°

Part No.	TC-371	TC-372
Description	HP Hyd. Coupler	HP Hyd. Nipple
Fitting	Remote Hyd. Tools & Pumps	Standard & Non-Conductive
Thread	3/8-18 NPSF	
Overall Length (mm)	63	46
Weight (g)	195	63

Hoses, Hydraulic

Low Pressure Hydraulic Hoses - Twin-Line - NRP Jones

- Twin low pressure flexible hydraulic hose
- Strain relief sleeve over crimped connections
- Temperature: -4°C to 93°C
- Certified non-conductive rubber
- Flush face couplers both ends
- Neoprene inner tube with nitrile outer, reinforced two textile braid

Part No.	Length (m)	ID (mm)	OD (mm)	Rated Pressure (PSI)	Min Burst (PSI)	Min Bend (mm)	Weight (kg)
B098-FF	3	3/8	3/4	2250	9000	127	1.9

High Pressure Hydraulic Hoses

Part No. Black - Standard

Part No. Orange - Non-Conductive

- High pressure - 700Bar/10,000PSI
- 3m standard and non-conductive hose available

Contact TEN for other lengths and coupler combinations

Single and Twin Hydraulic Hose Assemblies Available

Pressure Gauge, In-line Flow

Part No. REL-FPG

- Protect workers, valuable equipment, and property from damage caused by excess hydraulic pressure or flow
- Install between tool and hydraulic power source to test system output pressure and hydraulic flow
- Allows you to determine correct system pressure and hydraulic flow to the tool, reducing seal wear and extending the life and performance of your low pressure hydraulic tools
- Ideal for fleet and depot workshops

Contact TEN for fitting and coupler type



Protect Equipment and Workers



Punch Drivers - Punch & Dies

Punch Driver, Battery Powered - Greenlee

Part No. LS100FLEXCFM

Inteli-PUNCH™ Driver – Greenlee - Made in Germany

The 11-Tonne Battery powered Punch Driver from Greenlee is the fastest, most powerful knockout driver available on the market today.



- Auto-Retract Technology Patent-Pending - Pressure-sensing technology accurately detects punch completion and automatically retracts the ram, for longer tool life
- Time Saver - maximum cycle time of 8 seconds
- Punch up to 161.9mm size holes in mild steel and 115.4mm holes in stainless steel
- 360° Rotating Head - Rugged, patent-pending swivel design to punch at any angle
- Compact, Ergonomic Design - Ergonomic tapered grip for easy one-handed operation
- Gator Eye® Compatible - with i-Press™ software, monitor tool performance including peak forces and number of cycles
- Compatibility - Works with all Greenlee knockouts. Same draw studs used with other Greenlee Hydraulic punches
- Lightweight - 2.63kg
- Led light for dark areas

Technical Data

Output Force (kN)	11
Battery	Makita 18V - 4.0Ah*
Charging Time (min)	36
Weight (kg)	2.8 with Battery

* See page C37 for battery and charger information

Punching Capacity

Material	Punch Size (mm) OD	Material Thickness (mm)
Mild Steel	12.7 to 115.4	3.4
Stainless Steel	12.7 to 89.9 12.7 to 115.4	3.4 2.6

Order Information

Part No.	Description
LS100FLEXCFM-K	1 x Punch Driver 2 x 18v Makita Batteries 1 x Charger Draw Stud 19mm to 9.5mm (52042827) & Short Spacer (50032488)

* Draw Stud 19mm 52045298 is required for punch sizes 50.8mm (ISO50) & 63.5mm (ISO60)

NOTE: Above draw stud suits standard punch & dies and are not compatible with the Speed Punch & Dies on opposite page.

See opposite page for
Speed Punch™



**SAVE TIME & MONEY
WITH EVERY PUNCH**



**Punch Holes in Mild
& Stainless Steel**

**UP TO
3X
FASTER**



Punch & Dies Kit
ISO 16-40



SCAN or
CLICK
to View
Operation
Video



Stainless Steel Standard and square
Punch & Dies Option Available.
Contact TEN for further Information

HYDRAULIC EQUIPMENT

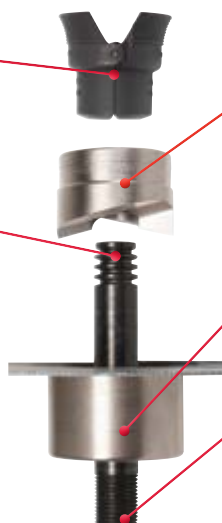
Speed Punch & Dies - Greenlee

SPEED LOCK

Quickly secures the system
in place - more holes, less
time.

RUGGED GROOVES

Holds up on the job - no
more damaged threads.



NO THREAD PUNCH

Easily slides on/off draw
stud.

EXTENDED DIE HEIGHT

No need for spacers.

STANDARD DRAW STUD END

Works with existing
hydraulic and battery-
operated punch drivers.

Speed Punch Knock-Out Kit - Metric ISO16 - 40

Part No. 52055439SET

For punching holes in mild steel, aluminium, fiberglass, and plastic

Capacity: Mild Steel Max 3.0 mm

Diameter: Actual hole sizes: 16.2mm to 40.5mm (ISO)

Driver: Use with Greenlee Punch Drivers: LS100 - Battery-Powered Driver, or
Hydraulic Drivers

(REQUIRES ALTERNATE LONG DRAW STUDS (7212SP13 & 7212SP12))

Kits Includes: 1 x each (Punch & Die) ISO-16, ISO-20, ISO-25, ISO-32, and ISO-40
1 x $\frac{3}{8}$ " Speed Lock & 1 x $\frac{3}{4}$ " Speed Lock
1 x $\frac{3}{8}$ " x 97mm Std. Draw Stud
1 x $\frac{3}{4}$ " x 122mm Std. Draw Stud
1 x Plastic Storage Case.

ISO: ISO-16 to ISO-63 Diameter

Material: Black Oxide Finish

Pilot Hole: $\frac{3}{8}$ " Draw Studs: 12.7mm PILOT HOLE

$\frac{3}{4}$ " Draw Studs: 22.2mm PILOT HOLE

Package: Plastic Storage Case

Weight: 3.39 kg

Kit Replacement Parts for ISO 16 to 40mm (52055439SET)

Punch Part No.	Description/Hole Size (mm)
52055431	Punch & Die - ISO-16 / 16.2
52055432	Punch & Die - ISO-20 / 20.4
52055434	Punch & Die - ISO-25 / 25.4
52055435	Punch & Die - ISO-30 / 32.5
52055436	Punch & Die - ISO-40 / 40.5

Accessories

Part No.	Description
52055439	$\frac{3}{8}$ " SPEED LOCK & $\frac{3}{8}$ " Draw Stud (12.7mm Pilot Hole)
52055440	$\frac{3}{4}$ " SPEED LOCK & $\frac{3}{4}$ " Draw Stud (22.2mm Pilot Hole)
KKSPISO16B63	Plastic Storage Case

Larger ISO Punch & Dies Sizes

Die Part No.	Description/Hole Size (mm)
52055437	Punch & Die - ISO-50 / 50.8
52055438	Punch & Die - ISO-63 / 63.5

Part No. ISOPD16-50 Mild and Stainless steel Punch and Dies

Punch & Dies Set (ISOPD16-50) includes:

- 7 x Round, 3 Crown ISO type, Punch & Dies
(*Indicated in table below)
- 1 x 9.5 x 80mm & 1 x 19 x 138mm Draw studs
- 1 x 20, 1 x 34 & 1 x 44mm Spacers

Punch & Draw Stud Part No's

Part No.	Hole Size (mm)	Draw Stud (mm)	Part No.
ISOPD-16	16*	3/8" (9.5)	DS3-8
ISOPD-20	20*	3/8" (9.5)	DS3-8
ISOPD-22.5	22.5*	3/8" (9.5)	DS3-8
ISOPD-25	25*	3/8" (9.5)	DS3-8
ISOPD-32	32*	3/4" (19)	DS3-4
ISOPD-40	40*	3/4" (19)	DS3-4
ISOPD-50	50*	3/4" (19)	DS3-4
PD-63.5	63.5	3/4" (19)	DS3-4
PD-75	75	3/4" (19)	DS3-4
PD-90	90	3/4" (19)	DS3-4

Spacer Part No's

Part No.	Spacer (mm)
DSS-20	20
DSS-34	34
DSS-44	44



Punch Driver, Hand Hydraulic

Part No. SB-10B

The SB-10B is a Hand Pump with a Remote Punching Head attached to a flexible Hose Lead. Often referred to as a Chassis Punch, this Unit is a Premium Quality Punch Kit.

- 1 x SB-10B Hand Hydraulic Punch kit
- 1 x Steel Carrying Case

SB-10B Punch Driver shown with Punch/dies, draw-studs & spacers. (sold separately)



Technical Data

Part No.	SB-10B
Output Force (kN)	8.8
Pressure (PSI)	10,000 (700bar)
Dimensions (mm)	370 x 220 x 130
Weight (kg)	9.0

Punching Capacity

Material	Punch Size (mm) OD	Material Thickness (mm)
Mild Steel	115.5	3.2
Stainless Steel	63.5/115.5	3.2/1.6

Square Punch & Dies available upon request

Punch Driver, Battery Powered - iToolco

Part No. GP122

Operates with most model 230vAC and Battery drills, new or old, with no special add-on tools required. Punches mild and stainless steel up to 152mm. The punches and dies are clearly marked with Centre Point™ marks for perfect alignment, no matter what direction you punch from. Lightweight and easy to use, the Gear Punch™ tool is compatible with other punch and die offerings.

Features

- Gear Punch, SS 2.4mm rated
- Knockout punch & Dies 12.7 through 152mm
- Draw Stud
- Step Bits Helical TiAn Coated
- 3/8 Nut Drivers
- Centre Point Knockout Layout Tool
- Fast and Easy compatible with Corded or Cordless Drill
- No Leaking Hydraulics
- No Hydraulic Seals to Replace

Kit Includes

Part No.	Description	Hole Size (mm)	Qty
GP01	Punch Tool	-	1
CP02	Centre Point Knockout Layout Tool	-	1
DS716	7/16" x 3/4" Draw studs	-	2
DS034	3/4" x 3/4" Draw Stud	-	2
ND038	3/8" Nut Driver	-	2
SB78	7/8" Step Bit	-	2
PD01	1/2" Punch and Die	22.5	1
PD02	3/4" Punch and Die	28.4	1
PD03	1" Punch and Die	34.5	1
PD04	1-1/4" Punch and Die	43.2	1
PD05	1-1/2" Punch and Die	49.6	1
PD06	2" Punch and Die	61.5	1
GPD02	1/2" - 2" Case		1

*Imperial sizes mentioned above refer to actual conduit sizes
(Larger size Punch and Die kits available upon request)





Punch Head, Hydraulic

Part No. SB-80C

The SB-80C Tower & Busbar punch is ideal for punching through steel tower legs & busbar, with a max hole diameter of 20.5mm.

Features

- Body manufacture from high strength steel
- Quick smooth punching with no burring
- Positing plate for precise punch location

The punch is sold standard with 4 punch & dies (10.5, 13.5, 17.5 & 20.5mm)

Additional accessories include die fixing tool, Allen key and Steel Carrying Case

- Include quick coupler for easy pump assembly
- Operate with a single acting hydraulic pump

Technical Data

Part No.	SB-80C
Output Force (T)	31
Pressure (PSI)	10,000 (700bar)
Tool Dimensions (mm)	250 x 100 x 370
Case Dimensions (mm)	440 x 380 x 160
Throat Depth (mm)	80
Weight (kg)	13.5

Punching Capacity

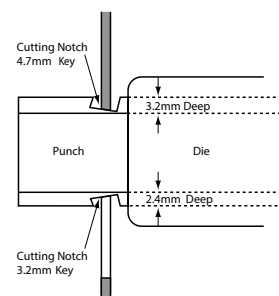
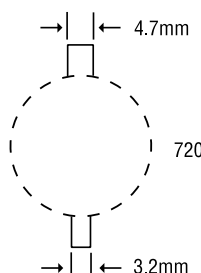
Material	Punch Size (mm) OD	Material Thickness (mm)
Mild Steel	20.5	10
CU/AL	20.5	13

NOTE: Optional punch & dies sold separately - 8.5, 11.5, 15.5 & 18.5mm

Keyway Punch - Hand operated - Greenlee

Part No. 720

Eliminates time-consuming hand sawing and filing making keyways for push-button switches
Use as a nibbler to make wider or deeper keyways in up to 3.2mm mild steel
Punches 3.2mm or 4.7mm keyways for 22.5mm or 30.5mm push-button holes



Ordering information

Part No.	Description	Weight (kg)
720	Keyway Punch	1.27
26536	Replacement Punch	-
26538	Replacement Die	-



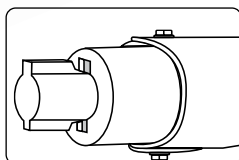
SB-80C shown stored in steel carry case



10.5, 13.5, 17.5 & 20.5mm punch & dies included in kit



Punch and Die



Contact TEN for further information on the Busbar Cutters & Benders

Busbar Bender, Hydraulic

Part No. BB-200C

Features

- Output force: 20T
- Pressure: 10,000psi
- Bending Capacity: 200 x 12mm
- Weight: 28kg



Busbar Cutter, Hydraulic

Part No. BC-200V

Features

- Output force: 30T
- Pressure: 10,000psi
- Cutting Capacity: 200 x 12mm
- Weight: 35kg



NOTES

A series of horizontal dotted lines for taking notes.