

*Ball Socket



*Centre Tab

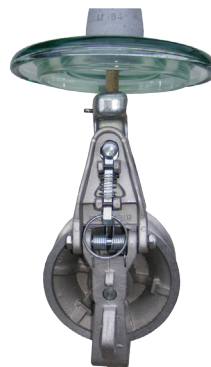


Stringing Rollers and Attachment Brackets

Universal Stringing Roller - SPP

Part No. SPP-1A

- Suitable for distribution and ABC
- Aluminium sheave
- Lightweight high strength heat treated aluminium
- Versatile attachment fittings include side and bottom tags and top ball socket fitting
- Side gate latch can be locked open
- Sheave is profile machined permitting precise sagging of conductor
- High quality permanently lubricated high temperature precision bearings



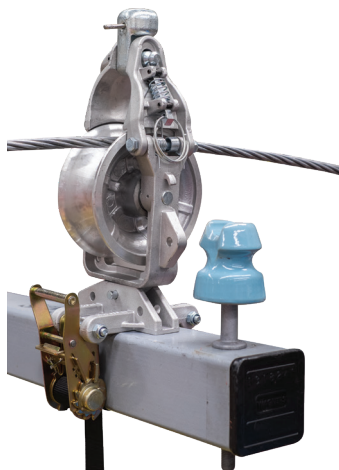
Part No. SPP-1A-DI

- Same Specifications as SPP-1A
- Ductile Iron sheave (SPP-1A-DI)
- Ideal for Pulling Steel conductor (e.g. 3/12 Steel) or steel catenary



| Part No. | Sheave Material | Maximum Conductor OD (mm) | WLL* (kg) | Weight (kg) | Bottom of Groove Diameter (mm) | Overall Height (mm) | Overall Width (mm) |
|-----------|-----------------|---------------------------|-----------|-------------|--------------------------------|---------------------|--------------------|
| SPP-1A | Aluminium | 50 | 1130 | 4 | 110 | 370 | 205 |
| SPP-1A-DI | Ductile Iron | 50 | 1130 | 5 | 110 | 370 | 205 |

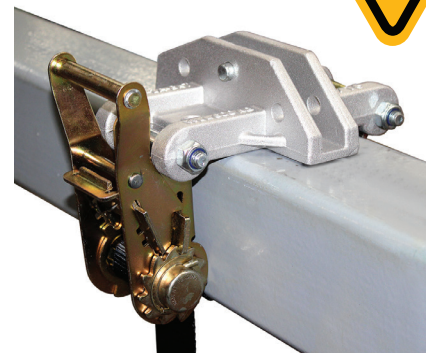
*WLL 1130kg when suspended from ball socket fitting or mounted on centre tab



Universal Roller Bracket - SPP

Part No. SPP-1A-BKT

- Versatile mounting bracket for cross-arms and poles
- Frame made from Cast Aluminium
- Lightweight, easy to install
- Heavy Duty Strap and Zinc Plated Ratchet Assembly
- 3 Mounting holes for various configurations
- Ball pin to secure roller
- Suits SPP-1A & SPP-1A-DI Rollers

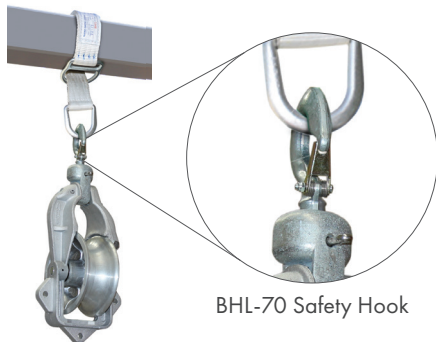


| Part No. | Min Cross Arm Size (mm) | Suit Poles OD (mm) | WLL (kg) | Wt (kg) |
|------------|-------------------------|--------------------|----------|---------|
| SPP-1A-BKT | 100 x 100 | 200-470 | 500 | 2.0 |

SPP-1A & SPP-1A-DI Rollers sold separately to SPP-1A-BKT Roller Bracket

Ball Clevis Socket Fittings

Part No. Various



BHL-70 Safety Hook



| Part No. | BC-70 | BEL-70 | BHL-70 | SPP-1-YC |
|-------------|-------------|---------------|-------------|---------------|
| Description | Ball Clevis | Oval Eye Ball | Safety Hook | Y Ball Clevis |
| WLL (kN) | 70 | 70 | 70 | 70 |
| Weight (kg) | 0.55 | 0.4 | 0.55 | 0.85 |



Universal Stringing Roller

Part No. SPP-1A-SB

- "Pull & Turn" style release gate
- Suitable for distribution & ABC
- Sealed ball bearings



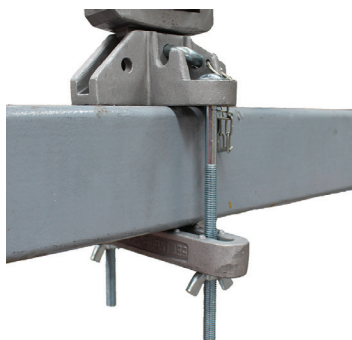
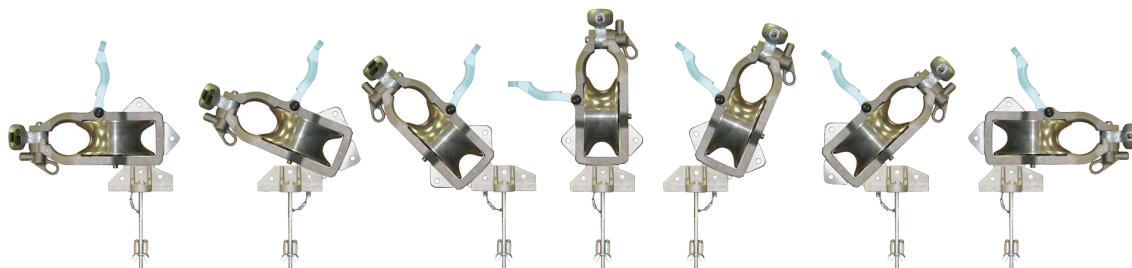
Click to view
Pull & Turn
Release Gate



Shown mounted on
SPP-1A-CAB
Cross Arm Bracket

| Part No. | Maximum OD Conductor (mm) | WLL (kg) | Wt (kg) | Bottom of Groove Diameter (mm) |
|-----------|---------------------------|----------|---------|--------------------------------|
| SPP-1A-SB | 50 | 1130 | 4.1 | 110 |

Universal Stringing Roller Mounting Configurations

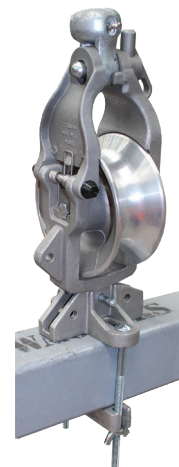


Cross Arm bracket

Part No. SPP-1A-CAB

Crossarm mount bracket to suit up to 127mm wide x 152mm deep Cross-arms

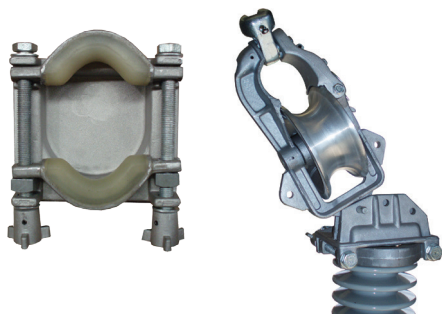
- Includes pin for securing universal roller
- NOTE: Refer Load ratings below*



Tie Top Post Insulator Bracket

Part No. SPP-1A-2A


- Manufactured from cast aluminium with urethane jaws
- Easy to operate reverse twist knobs
- Suits maximum insulator 123mm OD neck



| Part No. | Max Insulator Throat (mm) | WLL** (kg) | Wt (kg) |
|-----------|---------------------------|--------------------------------------|---------|
| SPP-1A-2A | 123 | Refer Load ratings on adjacent page* | 2.6 |

** Refer Insulator minimum failure load when considering the WLL

Universal Roller Bracket - Load Rating

| | |
|--|------|
|  <p>LOAD DIRECTION</p> | |
| SPP-1A-BKT* (WLL - kg) | 500 |
| 1A-2A* (WLL - kg) | 1130 |
| SPP-1A-CAB* (WLL - kg) | 1130 |



| | | | | | | |
|------------------------|------|------|------|-----|-----|-----|
| SPP-1A-BKT* (WLL - kg) | 500 | 500 | 500 | 500 | 500 | 500 |
| 1A-2A* (WLL - kg) | 1130 | 1130 | 1130 | 500 | 500 | 500 |
| SPP-1A-CAB* (WLL - kg) | 1130 | 1130 | 1130 | 500 | 500 | 500 |