

# TEN

the energy network

## LIFTING



### FEATURED PRODUCTS



B1



B2



B2



B6



## HOISTS

### Wire Rope Hoists

Part No: Various

- Lug-All wire rope hoists for lifting and/or pulling heavy equipment
- Reversible handle designed to bend on overload
- Swaged ball shank allows full extension of wire rope
- Self lubricating bearings
- Quick release will not function when the cable is under load
- Non-slip interlocking pawl system
- Open Design – Easily inspected
- Marine-grade models available
- Aluminium alloy frame and drop forged steel hooks
- Shear pin design on telescoping handle - 6000 Model only



**No hoists in this section should ever be used for lifting and lowering human cargo!**

| Part No    | Frame Size | Double Line   |                         |                   |                                 | Single Line   |                         |                   |                                 | Weight (kg) |
|------------|------------|---------------|-------------------------|-------------------|---------------------------------|---------------|-------------------------|-------------------|---------------------------------|-------------|
|            |            | Capacity (kg) | Force to Lift Load (kg) | Lift Distance (m) | Min Distance Between Hooks (mm) | Capacity (kg) | Force to Lift Load (kg) | Lift Distance (m) | Min Distance Between Hooks (mm) |             |
| 1500-25ANZ | Small      | 682           | 30                      | 3.81              | 533                             | 341           | 29                      | 7.62              | 406                             | 3.9         |
| 2250-20ANZ | Small      | 1022          | 39                      | 3.04              | 533                             | 511           | 38                      | 6.09              | 406                             | 4.2         |
| 2250-38ANZ | Medium     | 1022          | 45                      | 5.79              | 596                             | 511           | 38                      | 11.58             | 457                             | 6.3         |
| 3000-10ANZ | Small      | 1363          | 45                      | 1.52              | 533                             | 682           | 44                      | 3.04              | 406                             | 4.1         |
| 3000-30ANZ | Medium     | 1364          | 45                      | 4.57              | 596                             | 682           | 44                      | 9.14              | 457                             | 6.3         |
| 4000-20ANZ | Medium     | 1818          | 52                      | 3.04              | 673                             | 909           | 50                      | 6.09              | 469                             | 7.0         |
| 6000-15ANZ | Large      | 2728          | 50                      | 2.28              | 863                             | 1364          | 48                      | 4.57              | 673                             | 15.5        |

### Replacement Parts



| Part No    | Replacement Handle | Wingnut for Handle | Safety Hook Latch Repair Kit | U Frame Pawl | Main Frame Pawl Spring | Wire Rope |
|------------|--------------------|--------------------|------------------------------|--------------|------------------------|-----------|
| 1500-25ANZ | 101                | 119                | 263                          | 103          | 131                    | 109       |
| 2250-20ANZ | 117                | 119                | 263                          | 103          | 131                    | 341       |
| 2250-38ANZ | 209                | 119                | 263                          | 216          | 200                    | 210       |
| 3000-10ANZ | 146                | 119                | 263                          | 103          | 131                    | 147       |
| 3000-30ANZ | 211                | 119                | 263                          | 216          | 200                    | 212       |
| 4000-20ANZ | 198                | 119                | 263                          | 216          | 200                    | 185       |
| 6000-15ANZ | 688                | 678 (Thumbscrew)   | 264                          | 679          | 200                    | 662       |

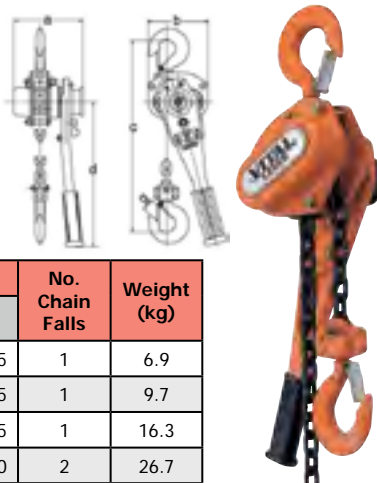




## Chain Hoists

Part No: VR2 Series

- Heavy duty Vital lever blocks are sturdy and versatile
- Suitable for lifting, pulling, tensioning and securing applications
- Easy two step operation prevents accidental free wheeling
- Hardened alloy steel load chain, grade 100.
- All steel construction conforming to the strict J.I.S and I.S.O regulations



| Part No | Part No w/ Overload Protection | Rated Capacity (Tonnes) | Standard Lift (m) | Pull to Lift Load (kg) | Dimensions (mm) |     |     |    |     | No. Chain Falls | Weight (kg) |
|---------|--------------------------------|-------------------------|-------------------|------------------------|-----------------|-----|-----|----|-----|-----------------|-------------|
|         |                                |                         |                   |                        | A               | B   | D   | G  | C   |                 |             |
| VLB107  | VLB107-OP                      | 0.8                     | 1.5               | 15                     | 148             | 128 | 260 | 27 | 295 | 1               | 6.9         |
| VLB115  | VLB115-OP                      | 1.6                     | 1.5               | 18                     | 163             | 148 | 370 | 34 | 355 | 1               | 9.7         |
| VLB130  | VLB130-OP                      | 3.2                     | 1.5               | 38                     | 191             | 181 | 370 | 43 | 405 | 1               | 16.3        |
| VLB160  | VLB160-OP                      | 6.3                     | 1.5               | 39                     | 191             | 244 | 370 | 47 | 550 | 2               | 26.7        |

LIFTING



## ROPE & TACKLE BLOCKS AND LIFTING ACCESSORIES

### Single Handline Block

Part No: HLB1250-S

- Handline rope block used for hauling or lifting
- No swivel eye for extra lift height
- Side gate opening with detent pin
- High strength forged steel swivel hook
- 75mm diameter free running sheave with shielded bearings
- Frame, head, and sheave cast from high strength A-356- T6 aluminium alloy



CAS600 (page B5) shown with HLB1250-S

| Part No   | Max Rope Ø (mm) | WLL (kg) | Weight (kg) |
|-----------|-----------------|----------|-------------|
| HLB1250-S | 14              | 560      | 1.2         |

#### Replacement Parts for HLB1250-S

| Part No | Description                          |
|---------|--------------------------------------|
| 400-006 | Hook Latch assembly with Pin & Chain |
| 400-012 | Hook Latch Kit                       |
| 400-110 | Hook with Nut & Safety Latch         |

### Single Non-Conductive Handline Block

Part No: 3550

- Non-conductive handline rope block used for hauling or lifting
- Side gate opening with captive screw pin
- High strength forged steel swivel hook
- 75mm diameter free running sheave with shielded bearings
- Block and sheave constructed of rugged nylon fiberglass reinforced high dielectric material



| Part No | Max Rope Ø (mm) | WLL (kg) | Weight (kg) |
|---------|-----------------|----------|-------------|
| 3550    | 15.8            | 450      | 0.8         |

#### Replacement Parts for 3550

| Part No | Description  |
|---------|--|
| A30069  | Replacement Screw Pin with Plastic Lanyard & Stainless Screw |
| A30234  | Hook Latch Kit   |





## Snatch Blocks

Part No: 418 Series

- Snatch blocks used for hauling or lifting
- Side gate opening with humpback pin
- Free running sheave
- Forged alloy heat treated hooks



| Part No  | Sheave Diameter (mm) | Bearing Type | Wire Rope Ø (mm) <sup>1</sup> | WLL (Tonnes) <sup>2</sup> | Weight Each (kg) |
|----------|----------------------|--------------|-------------------------------|---------------------------|------------------|
| 169043SC | 76                   | BB           | 8.0                           | 2                         | 2                |
| 108038SC | 76                   | BB           | 10.0                          | 2                         | 2                |
| 169089SC | 114                  | BB           | 10.0                          | 4                         | 5                |
| 108065SC | 114                  | BB           | 13.0                          | 4                         | 5                |
| 168419SC | 152                  | BB           | 16.0                          | 8                         | 12               |
| 199644SC |                      | RB           |                               |                           |                  |
| 108127SC | 152                  | BB           | 19.0                          | 8                         | 15               |
| 108154SC |                      | RB           |                               |                           |                  |
| 199671SC | 203                  | BB           | 16.0                          | 8                         | 15               |
| 199715SC |                      | RB           |                               |                           |                  |
| 108225SC |                      | BB           |                               |                           | 19               |
| 108252SC |                      | RB           |                               |                           |                  |
| 199788SC | 254                  | BB           | 16.0                          | 8                         | 19               |
| 199840SC |                      | RB           |                               |                           |                  |
| 108323SC | 254                  | BB           | 19.0                          | 8                         | 22               |
| 108350SC |                      | RB           |                               |                           |                  |
| 169169SC | 304                  | BB           | 16.0                          | 8                         | 22               |
| 199911SC |                      | RB           |                               |                           |                  |
| 108421SC | 304                  | BB           | 19.0                          | 8                         | 25               |
| 108458SC |                      | RB           |                               |                           |                  |
| 194920SC | 355                  | BB           | 16.0                          | 8                         | 25               |
| 199948SC |                      | RB           |                               |                           |                  |
| 108528SC | 355                  | BB           | 19.0                          | 8                         | 25               |
| 108546SC |                      | RB           |                               |                           |                  |
| 199975SC | 406                  | BB           | 19.0                          | 15                        | 59               |
| 200008SC |                      | RB           |                               |                           |                  |
| 108608SC | 406                  | BB           | 22.0                          | 15                        | 59               |
| 108626SC |                      | RB           |                               |                           |                  |
| 200099SC | 457                  | BB           | 22.0                          | 15                        | 68               |
| 200151SC |                      | RB           |                               |                           |                  |
| 108644SC | 457                  | BB           | 25.0                          | 15                        | 68               |
| 108662SC |                      | RB           |                               |                           |                  |

<sup>1</sup> Available in other wire rope sizes

<sup>2</sup> Breaking Load is 4 times the Working Load Limit.

**Note: When ordering specify: Size, Block Number, Bronze Bushed (BB) or Roller Bearing (RB) and Wire Rope Size**



## Multiple Sheave Insulated Tackle Blocks

Part No: 11 Series

- Plated swivel hook with safety latch and shotgun ring
- Becket for attaching rope
- High impact, dielectric thermoplastic body
- Fiberglass reinforced nylon sheave
- Stainless steel shaft



| Part No | WLL (kg) | Description                            | Upper (Sheave) | Lower (Sheave) | Weight (kg) |
|---------|----------|--|----------------|----------------|-------------|
| 11361   | 900      | Blocks only – no rope                  | 2              | 2              | 2.9         |
| 11362   | 900      | Blocks with 36.5m 13mm Polydacron Rope | 2              | 2              | 7.2         |
| 11367   | 900      | Blocks only – no ropes                 | 3              | 2              | 3.0         |
| 11368   | 900      | Blocks with 45.5m 13mm Polydacron Rope | 3              | 2              | 9.0         |
| 11052   | 900      | Single Block only                      | 2              | -----          | 1.7         |
| 11051   | 900      | Single Block only                      | 3              | -----          | 1.5         |

## Shackles

Part No: SHK Series

- Shackles for lifting
- Made to AS/NZS standards
- Galvanised hardened steel
- Not for UG Use (Refer to page A18)



| Available Tonnage (T) |
|-----------------------|
| 0.33                  |
| 0.5                   |
| 0.75                  |
| 1                     |
| 1.5                   |
| 2                     |
| 3.2                   |
| 4.7                   |
| 6.5                   |
| 8.5                   |
| 9.5                   |
| 12                    |

| Picture        |             |             |                      |                      |
|----------------|-------------|-------------|----------------------|----------------------|
| Description    | Bow Shackle | "D" Shackle | Bow Shackle – Safety | "D" Shackle - Safety |
| Part No Prefix | SHKB-       | SHKD-       | SHKBS-               | SHKDS-               |

Example: SHKB-8.5





## Round & Flat Lifting Slings

Part No: SLR & SLF Series

- Round slings to AS4497
- Flat slings to AS1353



|                |          |       |        |     |     |      |
|----------------|----------|-------|--------|-----|-----|------|
|                |          |       |        |     |     |      |
| Loading Factor | 1.0      | 0.8   | 2.0    | 1.7 | 1.4 | 1.0  |
| Lift Mode      | Vertical | Choke | Basket | 60° | 90° | 120° |

| Round Sling Part No | * Standard lengths (m)                 | Flat Sling Part No | * Standard lengths (m)      | Sling Colour | WLL (Tonnes) |     |    |      |      |    |
|---------------------|--|--------------------|-----------------------------|--------------|--------------|-----|----|------|------|----|
|                     |  |                    |                             |              | 1            | 0.8 | 2  | 1.7  | 1.4  | 1  |
| SLR1-*              | 0.5, 0.75, 1, 1.5, 2, 2.5, 3, 4, 5 & 6 | SLF1-*             | 1, 1.5, 2, 2.5, 3, 5 & 10   | Violet       | 1            | 0.8 | 2  | 1.7  | 1.4  | 1  |
| SLR2-*              | 0.5, 0.7, 1, 1.5, 2, 2.5, 3, 4, 5 & 6  | SLF2-*             | 1, 1.5, 2, 2.5, 3, 4, 5 & 6 | Green        | 2            | 1.6 | 4  | 3.4  | 2.8  | 2  |
| SLR3-*              | 1, 1.5, 2, 2.5, 3, 4, 5 & 6            | SLF3-*             | 2, 3, 4, 5 & 6              | Yellow       | 3            | 2.4 | 6  | 5.1  | 4.2  | 3  |
| SLR4-*              | 1, 1.5, 2, 3, 4, 5 & 6                 | SLF4-*             | 3 & 4                       | Grey         | 4            | 3.2 | 8  | 6.9  | 5.6  | 4  |
| SLR5-*              | 2, 3, 4, 5 & 6                         | SLF5-*             | 4                           | Red          | 5            | 4.0 | 10 | 8.6  | 7.0  | 5  |
| SLR6-*              | 2, 2.5, 3, 4, 5 & 6                    | SLF6-*             | 3                           | Brown        | 6            | 4.8 | 12 | 10.3 | 8.4  | 6  |
| SLR8-*              | 2, 2.5, 3, 4 & 6                       | SLF8-*             | 3                           | Blue         | 8            | 6.4 | 16 | 13.8 | 11.2 | 8  |
| SLR10-*             | 3, 4, 6, 8 & 10                        | SLF10-*            | -                           | Orange       | 10           | 8.0 | 20 | 17.3 | 14.1 | 10 |

Example: SLF1-1.5

## Cross Arm Sling

Part No: CAS-600

- Flat webbing sling
- Steel D ring at each end

| Part No | Length (mm) | Weight (kg) |
|---------|-------------|-------------|
| XAS-600 | 600         | 1.5         |



## Hooks

Part No: Various

- Range of hooks for industrial purposes

| Part No | Picture | Description    | Rating (kN) | Specification  |
|---------|---------|----------------|-------------|--|
| DASH    |         | Snap Hook      | 22.2        | Double Action, 19mm Opening, Max 25mm Rope, Forged Steel |
| P10060  |         | Hand Line Hook | 2.6         | Accepts 13mm Rope, Manganese Bronze Alloy                |

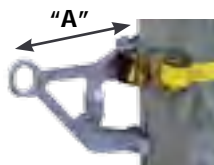


**GINS**

**Alloy Gins - Chain & Ratchet Strap**

Part No: Various

- For lifting transformers and heavy objects
- Stamped with load rating (WLL)
- High strength aluminium alloy
- High strength steel chain or webbing strap



| Picture              |              |               |              |
|----------------------|--------------|---------------|--------------|
|                      | Chain Binder | Ratchet Strap | Chain Binder |
| Part No              | 5742-21      | 5800-5        | 5742-24      |
| Type                 | Small        | Small         | Large        |
| WLL (kg)             | 860          | 860           | 2,040        |
| Fits Over X-Arm (mm) | 95 x 120     | 95 x 120      | 120 x 150    |
| Dimensions (mm) 'A'  | 270          | 270           | 280          |
| Weight (kg)          | 6            | 4             | 11           |

**Insulated Gins - Chain & Ratchet Strap**

Part No: Various

- For lifting transformers and heavy objects
- Stamped with load rating (WLL)
- Fibreglass shafts manufactured to ASTM F-711
- High strength aluminium alloy with Steel chain or webbing strap



| Drawing                       |            |            |            |            |            |      |
|-------------------------------|------------|------------|------------|------------|------------|------|
| Picture                       |            |            |            |            |            |      |
| Part No (Chain Binder)        | 5742-15    | 12707      | 11200      | 9434       | 12393      |      |
| Part No (Ratchet Strap)       | 5800-1     | 5800-3     | 5800-4     | 5800-7     | 5800-8     |      |
| Type                          | Light Duty | Heavy Duty | Heavy Duty | Heavy Duty | Heavy Duty |      |
| WLL (kg)                      | 450        | 1130       | 1130       | 1,720      | 1,720      |      |
| Dimensions (mm)               | A          | -          | -          | 914        | 1219       |      |
|                               | B          | 615        | 915        | 1220       | 508        | 863  |
|                               | C          | 255        | 457        | 686        | 1143       | 1447 |
| Chain Binder Gin Weight (kg)  | 5          | 12         | 16         | 22         | 22         |      |
| Ratchet Strap Gin Weight (kg) | 4          | 11         | 15         | 21         | 23         |      |

| Additional Dimensional Information | 5742-15 – Centre of eye 200mm from face of power pole. Inside of shaft mast is 25.4mm from face of pole.         |
|------------------------------------|--|
|                                    | 12707 & 11200 – Centre of clevis is 290mm from face of power pole. Inside shaft mast is 114mm from face of pole. |



## WINCHES

### Capstan Hoists - Electric & Petrol

Part No: C308 & REL-CH1000 Series

- Used for lifting transformers, insulators, etc
- Small and lightweight, perfect for use in remote and limited access areas
- 240VAC and 12VDC models available
- Step down transformer available for 115VAC models
- Models include foot control switch
- Refer over page for accessories for all models



| Part No    | Model  | WLL (kg) | Rope Speed (m per minute)* | Power Source        | Source, Minimum | Weight (kg) |
|------------|--------|----------|----------------------------|---------------------|-----------------|-------------|
| C308-1172  | DC     | 455      | 6.7                        | 12V                 | 90 Amp          | 25.7        |
| REL-CH1000 | AC     | 455      | 12.2                       | 240V                | 14 Amp          | 23.5        |
| C308-1370  | AC     | 1,360    | 3.7                        | 115V                | 14 Amp          | 26.0        |
| C308-1171  | AC     | 455      | 6.4                        | 240V                | 7 Amp           | 22.5        |
| C308-1190  | Petrol | 455      | 12.2                       | 35CC 4-Cycle Engine | 7,000 RPM       | 20.9        |
| C308-1390  | Petrol | 1,360    | 3.4                        | 35CC 4-Cycle Engine | 7,000 RPM       | 26.3        |

\* Operating Speed at Full Rating

### Capstan Hoist - Hydraulic

Part No: C308 Series

- Works directly from truck hydraulic systems
- Small and lightweight, perfect for use in remote and limited access areas
- Foot control switch sold separately
- Refer over page for accessories



| Part No   | WLL (kg) | Rope Speed (m per minute)* | Source, Minimum           | Foot Control | Weight (KG) |
|-----------|----------|----------------------------|---------------------------|--------------|-------------|
| C308-1180 | 455      | 28.3                       | 30L per minute & 1,000PSI | TC308-0685   | 12.9        |
| C308-1380 | 1,360    | 9.1                        | 30L per minute & 1,000PSI | TC308-0685   | 20.0        |












\* Operating Speed at Full Rating





## Accessories for Capstan Hoists

Part No: Various

| Part No         | Picture   | Device  | WLL (kg) | Description   | Weight (kg) |
|-----------------|---|---|----------|---|-------------|
| REL-CH-BRACKET* |    | All Purpose Bracket<br>(For Petrol model it is recommended to use TC308-0925 Univ. Bracket) | 455      | Includes 2 Chain Clamps for Poles (Up to 585mm OD), Angles & Beams  | 12.0        |
| E308-1321P*     |    | Bolt Down Bracket   | 455      | For Poles, Angles & Beams<br>(Same as above but no chains)  | 4.1         |
| C308-0925       |   | Universal Bracket   | 455      | Can be Bolted Down, for Poles, Angles & Beams use # E308-1334P  | 5.9         |
| E308-1334P      |    | Chain Clamp<br>(Suits All Purpose or Bolt Down Bracket)                                     | 455      | Chains are Single Units at 1830mm Long<br>(2 x Required)  | 2.7         |
| C417-0346       |   | Chain Clamp<br>(Suits Universal Bracket)  | 455      | Chains are Single Units at 2150mm Long<br>(2 x Required)  | 3.2         |
| T308-0999       |    | Tow Hitch Mount   | 455      | Square Tube Fits 50mm Square Vehicle Tow Hitch. Designed to Fit Swivel Base Mount. For 12VDC, 115VAC & Hydraulic Units.   | 9.6         |
| T308-1506       |  | Swivel Base Mount   | 455      | Assembled Swivel Bracket & C-Bracket Turntable Design Allows Various Circular Alignment (15° Intervals)   | 10.4        |
| C308-0903       |  | Swivel Bracket  | 455      | Swivel Bracket Only   | 8.1         |
| C308-0890       |  | C Bracket   | 455      | C-Bracket Only  | 2.3         |
| C316-0760       | n/a   | Special Application<br>Material Handler Mount   | 455      | Portable System, Automatically Takes up Rope on Reel (Must Order Separately: Mounts to Poles, Angles & Beams with # C308-0925 & # C417-0346; Take Up Reel # C417-0343H) | 17.2        |
| C417-0343H      | n/a   | Take up Reel  | 455      | To be used with Special Application Mount # C316-0760   | 9.0         |
| E308-1327P*     | n/a   | Capstan Drum  | 455      | Does not Include Mounting Bolt or Washer  | 3.2         |
| C417-6145       |  | Foot Control<br>(Suits 12VDC Model)   | 455      | ---   | 1.6         |
| REL-C-FS-1      |  | Foot Control<br>(Suits 115 & 240VAC Models)   | 455      | ---   | 1.81        |
| C308-0685       |  | Control<br>(Suits Hydraulic Model)  | 455      | ---   | 10.9        |
| C308-0856       |  | Rope Lock Device  | 455      | Includes 2 Mounting Bolts, Washers & Release Lanyard. Accepts 13mm, 16mm & 19mm Rope  | 0.9         |
| C308-0909       | n/a   | Weather Shield<br>(Suits 12VDC Model Only)  | -        | Supplied with Band Clamp  | 0.5         |

\* Contact TEN for details on 1360kg WLL versions





## POLE STANDS

### Lightweight Pole Stands

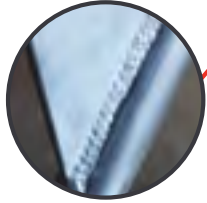
Part No: FS Series

- Lightweight aluminium construction with no moving parts minimises the risk of manual handling injuries
- Available in brushed aluminium or painted finish
- Unique data plate on each stand with option of company logo

| Picture             |             |             |            |            |
|---------------------|-------------|-------------|------------|------------|
| Part No             | FSLPSR-01-2 | FSLPSP-01-2 | FSTPSR-02  | FSTPSP-02  |
| WLL (kg)            | 4000        | 4000        | 4000       | 4000       |
| Height x Width (mm) | 500 x 700   | 500 x 700   | 900 x 1000 | 900 x 1000 |
| Finish              | Aluminium   | Painted     | Aluminium  | Painted    |
| Weight (kg)         | 7.10        | 7.10        | 7.95       | 7.95       |



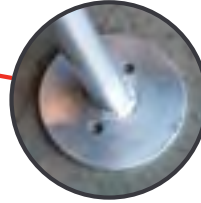
Unique Data Plate



Strong Welded Seams



Smooth Corners



Sturdy Base Plates

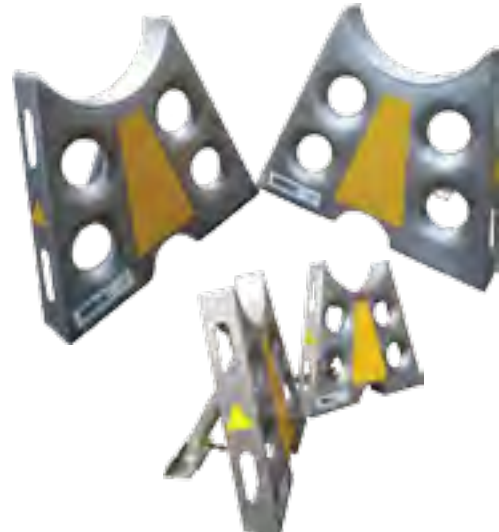


### Flat Stack Pole Stands

Part No: ME-PS-AFS Series

- Foldable for easy storage
- Brushed aluminium
- Reflective tape for improved visibility
- All stands come with load rating tags and serial numbers

| Part No             | ME-PS-AFS-4T-S | ME-PS-AFS-4T-L |
|---------------------|----------------|----------------|
| WLL (kg)            | 4000           | 4000           |
| Height x Depth (mm) | 500 x 100      | 850 x 100      |
| Finish              | Aluminium      | Aluminium      |
| Weight (kg)         | 10.5           | 13             |





## LIFTING TARPS

### Tarps

Part No: TWIST Series

- Used when digging, setting poles and backfilling
- Keep footpaths, property and worksites clean and tidy
- Overcomes manual handling
- Converts to ground mat when required
- Repair kits available
- Supplied with instructions and certification



| Part No      | Size (m)  | WLL (kg) | Dirt/Gravel (m3) |
|--------------|-----------|----------|------------------|
| TWIST6x6RP   | 1.8 x 1.8 | 318      | 2                |
| TWIST7x7RP   | 2.1 x 2.1 | 499      | 3                |
| TWIST8x8RP   | 2.4 x 2.4 | 635      | 4                |
| TWIST10x10RP | 3.0 x 3.0 | 728      | 6                |



### Approximate Weights of Dry Soil Removed from Holes (kg)

The below table identifies what model of Twistarp is required. Soil types may vary, table should be referred to as an indicative guide only. Moisture content in soil can affect weight.

| Hole or auger size in millimetres | Hole depth in metres (m) |     |      |      |      |      |      |      |      |      |
|-----------------------------------|--------------------------|-----|------|------|------|------|------|------|------|------|
|                                   | 0.3                      | 0.6 | 0.9  | 1.2  | 1.5  | 1.8  | 2.1  | 2.4  | 2.7  | 3.0  |
| 200                               | 20                       | 40  | 61   | 81   | 102  | 122  | 143  | 163  | 184  | 204  |
| 250                               | 31                       | 63  | 95   | 127  | 159  | 190  | 222  | 257  | 289  | 320  |
| 300                               | 45                       | 90  | 136  | 181  | 227  | 272  | 318  | 363  | 409  | 454  |
| 400                               | 82                       | 163 | 245  | 327  | 409  | 490  | 527  | 654  | 736  | 818  |
| 450                               | 104                      | 209 | 313  | 418  | 522  | 627  | 731  | 836  | 940  | 1045 |
| 500                               | 127                      | 254 | 381  | 509  | 636  | 763  | 890  | 1018 | 1145 | 1272 |
| 600                               | 182                      | 363 | 572  | 727  | 909  | 1090 | 1272 | 1454 | 1636 | 1818 |
| 750                               | 288                      | 577 | 865  | 1154 | 1443 | 1731 | 2020 | 2309 | 2592 | 2888 |
| 900                               | 417                      | 834 | 1251 | 1669 | 2086 | 2503 | 2920 | 3338 | 3755 | 4172 |
| Kilograms                         |                          |     |      |      |      |      |      |      |      |      |

  2 or more tarps required

